

COEUR D' ALENE DISPATCH ZONE
PRE-PLANNED RUNCARDS
FIRE SEASON 2022




TABLE OF CONTENTS

Response Level Matrix	4
Coeur d' Alene Dispatch Zone Fire Stations	5
Fire Station Alerting	6
Guiding Framework	7
Kootenai Valley FPD	
KVS Dispatch Blocks Map	9
Station 21 Information	10
KVS Runcards	11-14
Bonniers Ferry Ranger District	
D7 Dispatch Blocks Map	15
Station 7 Information	16
D7 Runcards	17-23
Priest Lake FPD	
PLS Dispatch Blocks Map	24
Station 11 Information	25
PLS Runcards	26-28
Priest Lake Ranger District	
D8 Dispatch Blocks Map	29
Station 8 Information	30
D8 Runcards	31-37
Pend Orielle FPD	
POS Dispatch Blocks Map	38

2022 CDC Runcards

Station 23 Information	39
POS Runcards	40-43
Sandpoint Ranger District	
D6 Dispatch Blocks Map	44
Station 6 Information	45
D6 Runcards	46-50
Mica FPD	
MIS Dispatch Blocks Map	51
Station 22 Information	52
MIS Runcards	53-56
Cataldo FPD	
CAS Dispatch Blocks Map	57
Station 31 Information	58
CAS Runcards	59-62
Coeur d' Alene River Ranger District	
D1 Dispatch Blocks Map	63
Station 1 Information	64
Station 3 Information	65
D1 Runcards	66-70
West St. Joe FPD	
SJS Dispatch Blocks Map	71
Station 32 Information	72
SJS Runcards	73-80

2022 CDC Runcards

St. Joe Ranger District

D4 Dispatch Blocks Map	81
Station 2 Information	82
Station 4 Information	83
D4 Runcards	84-87

Coeur d' Alene Tribe

CDT Dispatch Blocks Map	88
Station 55 Information	89
CDT Runcard	90

Dispatcher Appendices

Move up and Cover Matrix	91-92
Runcards with aviation on first alarm	93
Runcards with chief officers on first alarm	94
Runcards with Contact-DO only	94
Units with district-wide runcards	94
Dispatcher Situational Awareness Aid	95
Dispatch Scripts	96-98

Response Level Matrix

Response Levels will be established for each day utilizing the Predicted B.I. from the previous day's processor. Each FDRA has an attached Special Interest Group (SIG) of weather stations for the purposes of setting response level. The SIG makeup is as follows:

FDRA	SIG NAME	COMPONENT WEATHER STATIONS
North Mountains	FDRA #1 North Mountains	Priest Lake, Hoodoo
North Valley	FDRA #2 North Valleys	Bonners Ferry
South Mountains	FDRA #3 South Mountains	Nuckols, Lines Creek, Magee Peak
South Valley	FDRA #4 South Valley	Nuckols, Potlatch

Response Levels for each FDRA are established using the following matrix:

FDRA	LIGHT RESPONSE	MEDIUM RESPONSE	HEAVY RESPONSE
North Mountains	0-55	56-79	80+
North Valley	0-27	28-37	38+
South Mountains	0-29	30-41	42+
South Valley	0-28	29-37	38+

Duty Officers will retain the discretion to set their unit to a different response level than indicated by the Predicted B.I. for any given fire day, or to modify the response level for any given incident.

Coeur d' Alene Dispatch Zone Fire Stations

Station Number	Facility Name	Address
1	Silver Valley Office	173 Commerce Drive Smelterville
2	Avery Ranger Station	34 Hoyt Drive Avery
3	Fernan Ranger Station	2502 E. Sherman Avenue Coeur d' Alene
4	St. Maries Bullpen	1029 Center Ave St. Maries
5	Coeur d' Alene Air Center	11569 N Airport Drive Hayden
6	Sandpoint Ranger Station	1602 Ontario Street Sandpoint
7	Bonnors Ferry Ranger Station	6286 Main Street Bonnors Ferry
8	Priest Lake Ranger Station	32203 Hwy 57 Nordman
9	Coeur d' Alene Interagency Dispatch/ Idaho Panhandle IHC	3260 W Nursery Road Coeur d' Alene
11	Priest Lake FPD Office	4053 Cavanaugh Bay Rd Coolin
21	Kootenai Valley FPD Office	6327 Main Street Bonnors Ferry
22	Mica FPD Office	3258 W Industrial Loop Coeur d' Alene
23	Pend Orielle FPD Office	2550 Hwy 2 West Sandpoint
31	Cataldo FPD Office	80 Hilltop Overpass Rd Kingston
32	West St. Joe FPD Office	1806 Main St. Maries
55	Coeur d' Alene Tribal Fire Management	Agency Road Plummer

Fire Station Alerting

FIRE STATION	PRIMARY ALERTING REPEATER
1	WARDNER FS
2	DUNN FS
3	MICA FS
4	ST. JOE BALDY FS
5	MICA IDL
6	SANDPOINT BALDY FS
7	BLACK FS
8	HORTON FS
11	LAKEVIEW IDL
21	BLACK IDL
22	MICA IDL
23	SCHWEITZER IDL
31	WARDNER IDL
32	ST. JOE BALDY IDL
55	MICA CDT

In the event of failure of the primary alerting repeater, CDC will immediately contact the affected Duty Officer(s) and determine an alternate means of resource alerting.

In the event of significant usage of MICA IDL as a command frequency, CDC will coordinate with Air Center personnel to switch to MICA BLM for Station 5 alerting.

Guiding Framework

The following principles will serve to guide dispatchers in the implementation of runcards in the CDC zone:

- Response levels will be set at 1000 each morning using the predicted BI from yesterday's processor.
- Runcards will be "turned on" at 1000 each morning while Daily Status/Roll Call is mandatory, and remain active for each given unit until that unit's close of business.
- Dispatchers will contact any Duty Officer(s) and Helitack Foremen who have not updated Daily Status/Roll Call by 1000.
- When runcards are active, and a fire/smoke report is received at CDC, CDC will then dispatch fire resources as directed in the pre-planned runcards, and then notify both the Duty Officer with jurisdiction and the Duty Officer(s) of all responding units.
- Unless a specific runcard has been developed, runcards will be utilized for reports of wildfire only. Reports of vehicle fires, structure fires, abandoned campfires, etc. will be referred to the appropriate Duty Officer for advisement. (See "Units with District-wide runcards in the Appendix)
- The PRIMARY means of dispatching in-service resources will be over the radio, from CDC to the responding resource(s). Fire resources stasured as in-service **WILL** be available by radio.
- Duty Officer(s) retain the authority to augment/modify/supplant/delay any fire response generated by CDC. Radio is the preferred method of interaction.
- If uncertainty exists as to which Dispatch Block a given fire report lies in, CDC will generate a response for the **highest** response of the candidate Dispatch Blocks. The same logic will be applied to potential border fire scenarios, with subsequent notification to all affected DO's.
- "ICT4" assignments on runcards will be filled by the closest available ICT4, whether attached to a module or not. When the initial response would not include any modules with ICT4's on-board, and a module-attached ICT4 is used to fill the ICT4 runcard assignment, the attached module will respond **in addition** to the closest-forces runcard response.
- A given unit's last available initial attack resource will not be utilized to fill "move-up-and-cover" assignments. A given unit's last available initial attack resource **IS** available to dispatch for fire responses.

2022 CDC Runcards

--When resource availability makes it impossible to fill any given "District"-only assignment on any given runcard, CDC will assign any available non-District resources in place of District resources.

--When a Duty Officer for a given unit declares "Lightning Plan", the following will occur:

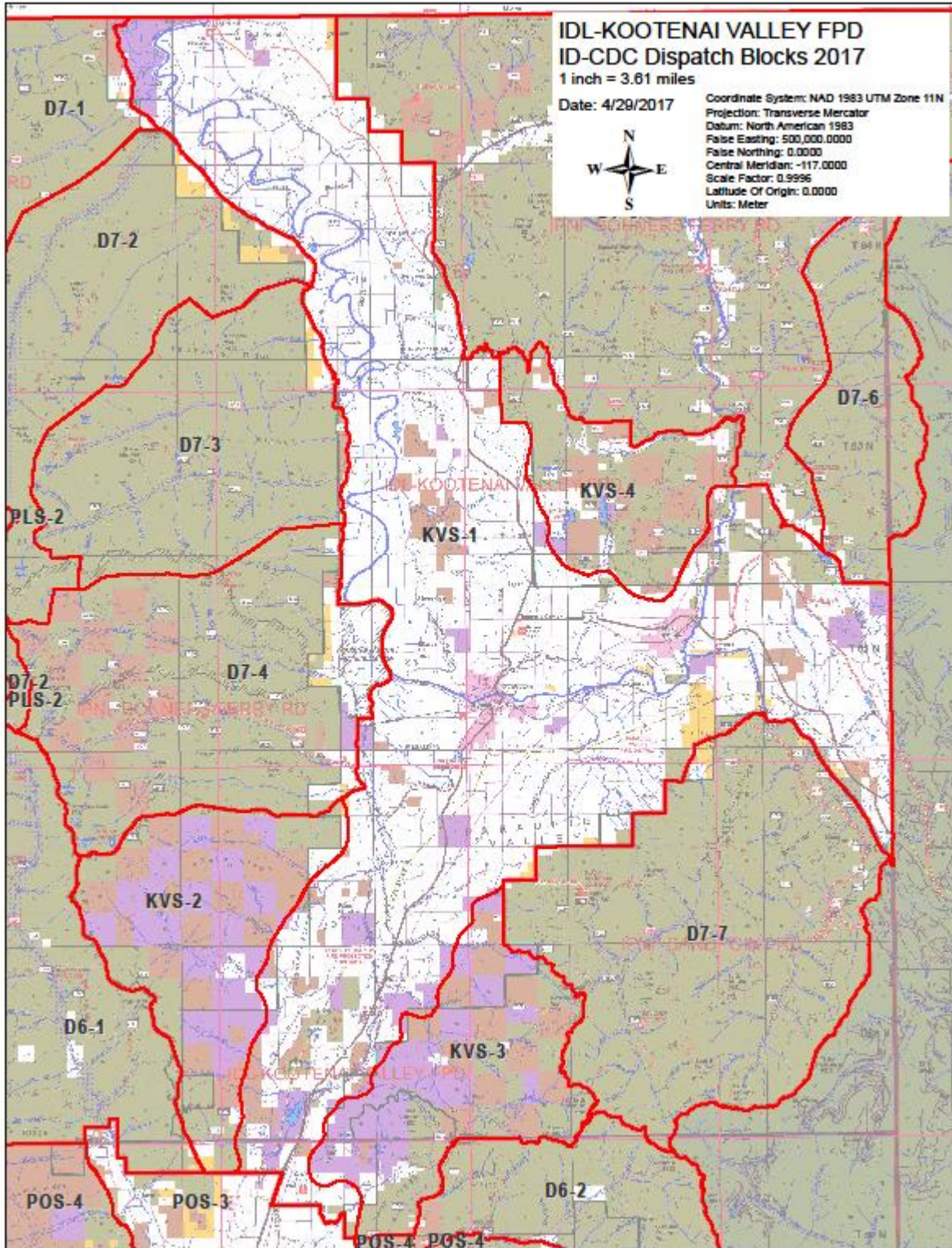
1) Run cards for that unit will be "turned off", and all fire reports on that unit will revert to Duty Officer dispatching.

2) That unit's resources will no longer be utilized to fill runcard assignments to neighboring units without Duty Officer concurrence.

--When a given fire station is emptied by runcard assignments that provide for no move-up coverage, the CDC Floor Supervisor will initiate a conversation with the affected Duty Officer about providing for initial attack backfill.

--End of shift/return to station for moved-up resources will be determined by the hosting Duty Officer and communicated to CDC, who will coordinate with the moved-up resource and the home Duty Officer.

KOOTENAI VALLEY FPD



2022 CDC Runcards

STATION 21 INFORMATION

Primary Repeater	Black IDL
Street Address	6327 Main Street, Bonners Ferry
Receptionist/Frontliner	Yes, M-F 0800-1700
Cell Service	Good
WIFI Service	No
Yale key access?	No
Alternate Standby Location(s)	Nearby gas stations, IDL Orchard adjacent
Access Instructions	
Nearest Fuel	Multiple options nearby
Recommended Food Nearby	Multiple options nearby
Nearest Fill-sites	In the IDL compound or FS compound across the street. Or downtown Bonners Ferry, turn west on Riverside St. go for ¾ of a mile, boat launch at the Kootenai River.
Additional Information	Orchard next door is great for camping and 3 showers available in the office.



2022 CDC Runcards

Preplanned Dispatch Runcard for:

AGENCY	UNIT	DISPATCH BLOCK #	DISPATCH BLOCK NAME	FDRA	COMMAND REPEATER
IDL	KVS	KVS-1	VALLEY	NORTH VALLEY	BLACK IDL

	LIGHT	MEDIUM	HEAVY	2ND ALARM
FIRE RESPONSE	Notify DO	1 District Engine	1 District Engine 2'nd Engine ICT4	Retardant
TAC FREQ	PRI: IDL DIR 5 SEC: IDL DIR 4 TER: ComUse 1	PRI: IDL DIR 5 SEC: IDL DIR 4 TER: ComUse 1	PRI: IDL DIR 5 SEC: IDL DIR 4 TER: ComUse 1	PRI: IDL DIR 5 SEC: IDL DIR 4 TER: ComUse 1
MOVE-UPS			Maintain 1 Engine in Bonners Ferry	
CDC NOTIFICATIONS		POS DO D7 DO BCFS if within 3 miles of border	POS DO D7 DO Boundary Co 911 BCFS if within 5 miles of border	
CONSIDERATIONS	INVF	INVF	INVF Helicopter	INVF
HAZARDS	WUI	WUI	WUI	WUI
REMARKS				

2022 CDC Runcards

Preplanned Dispatch Runcard for:

AGENCY	UNIT	DISPATCH BLOCK #	DISPATCH BLOCK NAME	FDRA	COMMAND REPEATER
IDL	KVS	KVS-2	HIGHLAND-DODGE	NORTH MOUNTAINS	BLACK IDL

	LIGHT	MEDIUM	HEAVY	2 ND ALARM
FIRE RESPONSE	Notify DO	1 District Engine	1 District Engine 2'nd Engine ICT4	Retardant
TAC FREQ	PRI: IDL DIR 5 SEC: IDL DIR 4 TER: ComUse 1	PRI: IDL DIR 5 SEC: IDL DIR 4 TER: ComUse 1	PRI: IDL DIR 5 SEC: IDL DIR 4 TER: ComUse 1	PRI: IDL DIR 5 SEC: IDL DIR 4 TER: ComUse 1
MOVE-UPS			Maintain 1 Engine in Bonners Ferry	
CDC NOTIFICATIONS		POS DO D7 DO	POS DO D7 DO Boundary Co 911	
CONSIDERATIONS	INVF If in FS T61N R1W S14, contact D7 DO re: Three Ponds RNA Contact Landowner	INVF If in FS T61N R1W S14, contact D7 DO re: Three Ponds RNA Contact Landowner	INVF Helicopter If in FS T61N R1W S14, contact D7 DO re: Three Ponds RNA Contact Landowner	
HAZARDS				
REMARKS				

2022 CDC Runcards

Preplanned Dispatch Runcard for:

AGENCY	UNIT	DISPATCH BLOCK #	DISPATCH BLOCK NAME	FDRA	COMMAND REPEATER
IDL	KVS	KVS-3	TRAIL CREEK	NORTH MOUNTAINS	BLACK IDL

	LIGHT	MEDIUM	HEAVY	2 ND ALARM
FIRE RESPONSE	Notify DO	1 District Engine	1 District Engine 2'nd Engine ICT4	Retardant
TAC FREQ	PRI: IDL DIR 5 SEC: IDL DIR 4 TER: ComUse 1	PRI: IDL DIR 5 SEC: IDL DIR 4 TER: ComUse 1	PRI: IDL DIR 5 SEC: IDL DIR 4 TER: ComUse 1	PRI: IDL DIR 5 SEC: IDL DIR 4 TER: ComUse 1
MOVE-UPS			Maintain 1 Engine in Bonners Ferry	
CDC NOTIFICATIONS		POS DO D7 DO	POS DO D7 DO Boundary Co 911	
CONSIDERATIONS	INVF Contact Landowner	INVF Contact Landowner	INVF Helicopter Contact Landowner	
HAZARDS				
REMARKS				

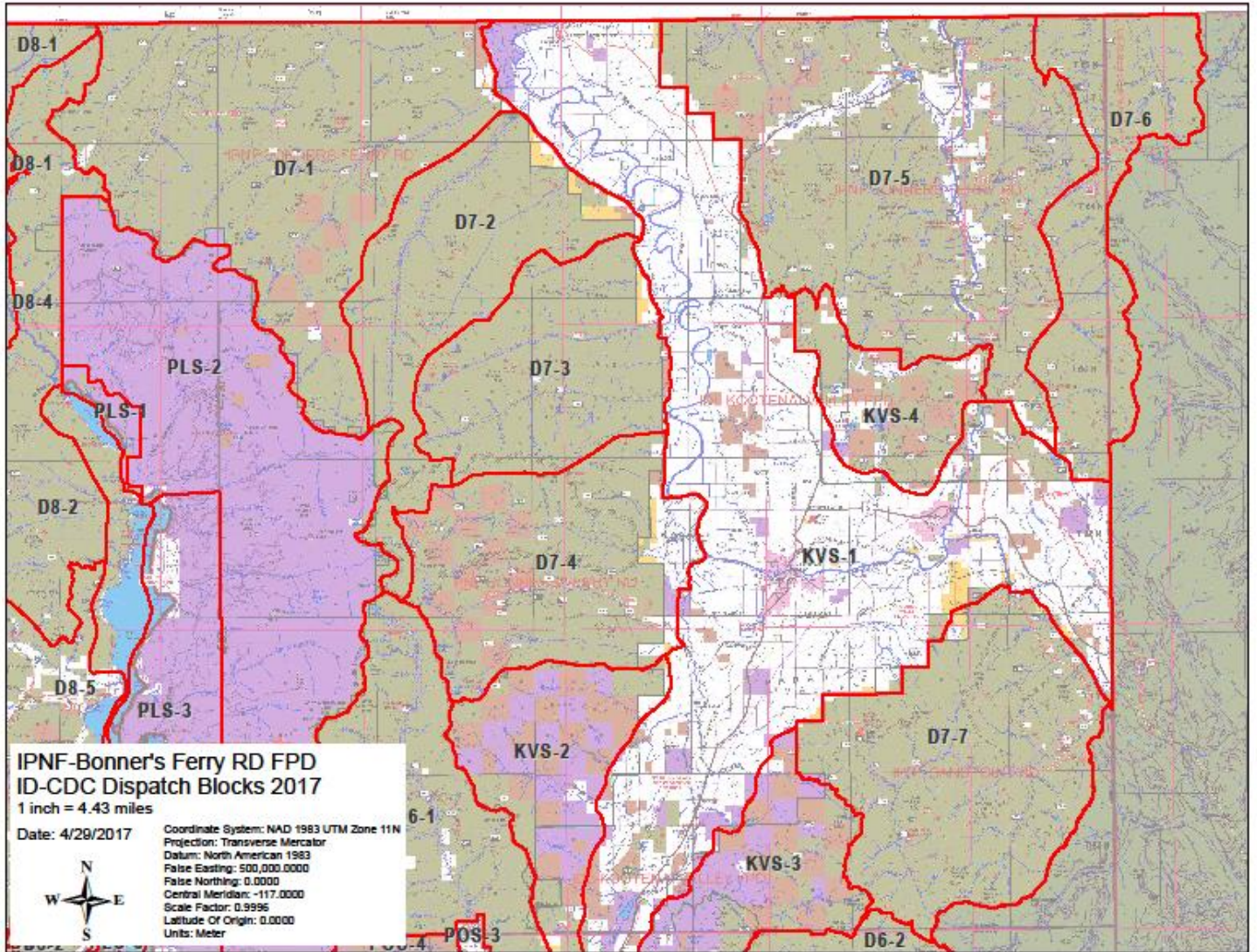
2022 CDC Runcards

Preplanned Dispatch Runcard for:

AGENCY	UNIT	DISPATCH BLOCK #	DISPATCH BLOCK NAME	FDRA	COMMAND REPEATER
IDL	KVS	KVS-4	DAWSON / CAMP 9	NORTH MOUNTAINS	BLACK IDL

	LIGHT	MEDIUM	HEAVY	2 ND ALARM
FIRE RESPONSE	Notify DO	1 District Engine	1 District Engine 2'nd Engine ICT4 1 Helicopter	Retardant
TAC FREQ	PRI: IDL DIR 5 SEC: IDL DIR 4 TER: ComUse 1	PRI: IDL DIR 5 SEC: IDL DIR 4 TER: ComUse 1	PRI: IDL DIR 5 SEC: IDL DIR 4 TER: ComUse 1	PRI: IDL DIR 5 SEC: IDL DIR 4 TER: ComUse 1
MOVE-UPS			Maintain 1 Engine in Bonners Ferry	
CDC NOTIFICATIONS		POS DO D7 DO	POS DO D7 DO Boundary Co 911	
CONSIDERATIONS	INVF Contact Landowner	INVF Contact Landowner If in T63N R1E S1, Consider WUI	INVF Helicopter Contact Landowner If in T63N R1E S1, Consider WUI	
HAZARDS				
REMARKS				

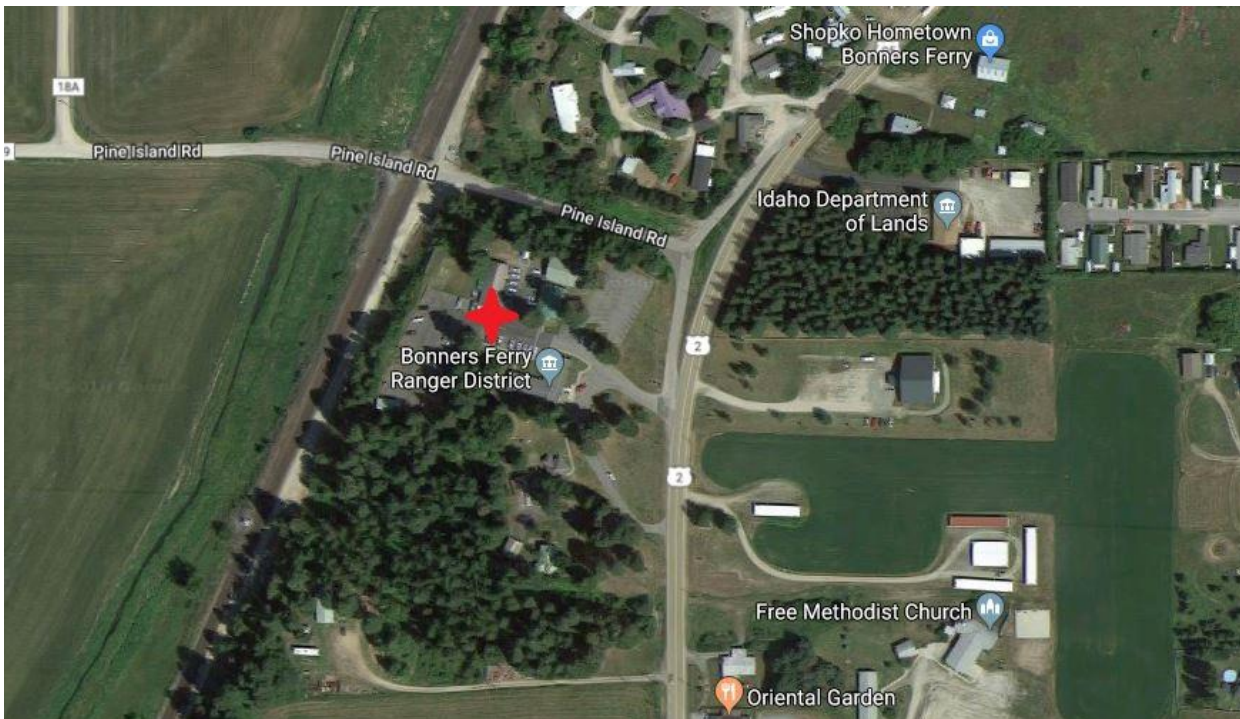
BONNERS FERRY RANGER DISTRICT



2022 CDC Runcards

STATION 7 INFORMATION

Primary Repeater	Black FS
Street Address	6286 Main Street, Bonners Ferry
Receptionist/Frontliner	Yes, M-F 0800-1630
Cell Service	Good
WIFI Service	No
Yale key access?	No
Alternate Standby Location(s)	Super 1 Grocery Store, City Park Downtown
Access Instructions	Call Duty Officer
Nearest Fuel	Conoco, 0.1 miles North on HWY 95
Recommended Food Nearby	Downtown Bonners Ferry
Nearest Fill-sites	Hydrant in front of fire cache
Additional Information	Standard FS Yale Key does not work here



2022 CDC Runcards

Preplanned Dispatch Runcard for:

AGENCY	UNIT	DISPATCH BLOCK #	DISPATCH BLOCK NAME	FDRA	COMMAND REPEATER
USFS	D7	D7-1	SMITH	NORTH MOUNTAINS	SADDLE FS OR HALL FS

	LIGHT	MEDIUM	HEAVY	2 ND ALARM
FIRE RESPONSE	1 District Engine -or- 1 District I/A Module	1 District Engine -or- 1 District I/A Module (If within 1mile of Westside Rd, send Engine)	1 District Engine -or- 1 District I/A Module 1 Helicopter (If within 1mile of Westside Rd, send Engine)	1 I/A Module ICT4 If within 1 mile of Westside Rd: 1 Engine
TAC FREQ	PRI: ComUse 1 SEC: ComUse 2 TER: IDL DIR5	PRI: ComUse 1 SEC: ComUse 2 TER: IDL DIR5	PRI: ComUse 1 SEC: ComUse 2 TER: IDL DIR5	
MOVE-UPS			Contact DO	Maintain 1 Engine or I/A Module in Bonners Ferry. Contact DO for location.
CDC NOTIFICATIONS	BCFS if within 1 mile of border Hall Mountain FD via Boundary Co 911 if within 1 mile of Westside Rd.	BCFS if within 3 miles of border Hall Mountain FD via Boundary Co 911 if within 1 mile of Westside Rd.	BCFS if within 5 miles of border Hall Mountain FD via Boundary Co 911 if within 1 mile of Westside Rd.	
CONSIDERATIONS	Canadian forces assist if fire threatens border Smith Creek RNA Smith Creek water diversion structure Private land Checkerboard	Canadian forces assist if fire threatens border Smith Creek RNA Smith Creek water diversion structure Private land Checkerboard	Canadian forces assist if fire threatens border Smith Creek RNA Smith Creek water diversion structure Private land Checkerboard	DO and CDC discuss logistics and prioritization
HAZARDS	Steep/Narrow roads, long drive times	Steep/Narrow roads, long drive times	Steep/Narrow roads, long drive times	Steep/Narrow roads, long drive times
REMARKS	DO will contact District FMO and Line Officer Determine tactics and strategies if within RNA, Contact Line Officer / NZ Botanist/ Forest Ecologist	DO will contact District FMO and Line Officer Determine tactics and strategies if within RNA, Contact Line Officer / NZ Botanist/ Forest Ecologist	DO will contact District FMO and Line Officer Determine tactics and strategies if within RNA, Contact Line Officer / NZ Botanist/ Forest Ecologist	DO will contact District FMO and Line Officer Determine tactics and strategies if within RNA, Contact Line Officer / NZ Botanist/ Forest Ecologist

2022 CDC Runcards

Preplanned Dispatch Runcard for:

AGENCY	UNIT	DISPATCH BLOCK #	DISPATCH BLOCK NAME	FDRA	COMMAND REPEATER
USFS	D7	D7-2	LONG CANYON REC WILDERNESS	NORTH MOUNTAINS	BLACK FS OR HALL FS

	LIGHT	MEDIUM	HEAVY	2 ND ALARM
FIRE RESPONSE	Contact DO 1 District Engine if within 1 mile of Westside Road	Contact DO 1 District Engine if within 1 mile of Westside Road	Contact DO 1 District Engine if within 1 mile of Westside Road	1 Engine -or- 1 I/A Module (preferred)
TAC FREQ	PRI: ComUse 1 SEC: ComUse 2 TER: IDL DIR5	PRI: ComUse 1 SEC: ComUse 2 TER: IDL DIR5	PRI: ComUse 1 SEC: ComUse 2 TER: IDL DIR5	
MOVE-UPS			Contact DO	Maintain 1 Engine or I/A Module in Bonners Ferry. Contact DO for location.
CDC NOTIFICATIONS	Hall Mountain FD via Boundary Co 911 if within 1 mile of Westside Rd.	Hall Mountain FD via Boundary Co 911 if within 1 mile of Westside Rd.	Hall Mountain FD via Boundary Co 911 if within 1 mile of Westside Rd.	
CONSIDERATIONS	Proposed Wilderness area strategies and tactics Approved for chainsaw use, need approval for landings Hall Mtn VFD Protection	Proposed Wilderness area strategies and tactics Approved for chainsaw use, need approval for landings Hall Mtn VFD Protection	Proposed Wilderness area strategies and tactics Approved for chainsaw use, need approval for landings Hall Mtn VFD Protection	
HAZARDS	Steep, remote country Logistics	Steep, remote country Logistics	Steep, remote country Logistics	Steep, remote country Logistics
REMARKS	DO will contact District FMO and Line Officer Discussions about strategies and tactics in Proposed Wilderness	DO will contact District FMO and Line Officer Discussions about strategies and tactics in Proposed Wilderness	DO will contact District FMO and Line Officer Discussions about strategies and tactics in Proposed Wilderness	DO will contact District FMO and Line Officer Discussions about strategies and tactics in Proposed Wilderness

2022 CDC Runcards

Preplanned Dispatch Runcard for:

AGENCY	UNIT	DISPATCH BLOCK #	DISPATCH BLOCK NAME	FDRA	COMMAND REPEATER
USFS	D7	D7-3	TROUT / BALL	NORTH MOUNTAINS	BLACK FS

	LIGHT	MEDIUM	HEAVY	2 ND ALARM
FIRE RESPONSE	1 District I/A Module -or- 1 District Engine (If within 1mile of Westside Rd, send Engine)	1 District I/A Module -or- 1 District Engine (If within 1mile of Westside Rd, send Engine)	1 District Engine -or- 1 District I/A Module 1 Helicopter (If within 1mile of Westside Rd, send Engine)	1 Engine -or- 1 I/A Module If within 1 mile of Westside Rd: 1 I/A Module ICT4
TAC FREQ	PRI: ComUse 1 SEC: ComUse 2 TER: IDL DIR5	PRI: ComUse 1 SEC: ComUse 2 TER: IDL DIR5	PRI: ComUse 1 SEC: ComUse 2 TER: IDL DIR5	PRI: ComUse 1 SEC: ComUse 2 TER: IDL DIR5
MOVE-UPS				Maintain 1 Engine or I/A Module in Bonners Ferry. Contact DO for location.
CDC NOTIFICATIONS	Hall Mountain FD via Boundary Co 911 if within 1 mile of Westside Rd.	Hall Mountain FD via Boundary Co 911 if within 1 mile of Westside Rd.	Hall Mountain FD via Boundary Co 911 if within 1 mile of Westside Rd.	
CONSIDERATIONS	Selkirk crest Wilderness Study Area (BLM)	Selkirk crest Wilderness Study Area (BLM)	Selkirk crest Wilderness Study Area (BLM)	
HAZARDS	Steep/Narrow Roads	Steep/Narrow Roads	Steep/Narrow Roads	Steep/Narrow Roads
REMARKS	DO will contact District FMO and Line Officer If in wilderness study area, Line Officer have discussions with BLM A/A	DO will contact District FMO and Line Officer If in wilderness study area, Line Officer have discussions with BLM A/A	DO will contact District FMO and Line Officer If in wilderness study area, Line Officer have discussions with BLM A/A	

2022 CDC Runcards

Preplanned Dispatch Runcard for:

AGENCY	UNIT	DISPATCH BLOCK #	DISPATCH BLOCK NAME	FDRA	COMMAND REPEATER
USFS	D7	D7-4	MYRTLE / SNOW	NORTH MOUNTAINS	BLACK FS

	LIGHT	MEDIUM	HEAVY	2 ND ALARM
FIRE RESPONSE	1 District Engine -or- 1 District I/A Module (If within 1mile of Westside Rd, send Engine)	1 District Engine -or- 1 District I/A Module (If within 1mile of Westside Rd, send Engine)	1 Engine 1 I/A Module -Or- 2'nd Engine 1 Helicopter	Retardant ICT4 If within 1 mile of Westside Rd, 1 I/A Module or Engine
TAC FREQ	PRI: ComUse 1 SEC: ComUse 2 TER: IDL DIR5	PRI: ComUse 1 SEC: ComUse 2 TER: IDL DIR5	PRI: ComUse 1 SEC: ComUse 2 TER: IDL DIR5	PRI: ComUse 1 SEC: ComUse 2 TER: IDL DIR5
MOVE-UPS			Maintain 1 Engine or I/A Module in Bonners Ferry. Contact DO for location.	Maintain 1 Engine or I/A Module in Bonners Ferry. Contact DO for location.
CDC NOTIFICATIONS	If applicable, via Boundary 911: Hall Mtn FD North Bench FD South Boundary FPD	If applicable, via Boundary 911: Hall Mtn FD North Bench FD South Boundary FPD	If applicable, via Boundary 911: Hall Mtn FD North Bench FD South Boundary FPD	
CONSIDERATIONS	Hall Mtn, North Bench or South Boundary FPD protection	Hall Mtn, North Bench or South Boundary FPD protection	Hall Mtn, North Bench or South Boundary FPD protection	DO and CDC discuss logistics and prioritization
HAZARDS	Steep/Narrow Roads Long drive times	Steep/Narrow Roads Long drive times	Steep/Narrow Roads Long drive times	Steep/Narrow Roads Long drive times
REMARKS	DO will contact District FMO and Line Officer Make contact with private landowners if in checkerboard	DO will contact District FMO and Line Officer Make contact with private landowners if in checkerboard	DO will contact District FMO and Line Officer Make contact with private landowners if in checkerboard	DO will contact District FMO and Line Officer

2022 CDC Runcards

Preplanned Dispatch Runcard for:

AGENCY	UNIT	DISPATCH BLOCK #	DISPATCH BLOCK NAME	FDRA	COMMAND REPEATER
USFS	D7	D7-5	BONNERS NORTH	NORTH MOUNTAINS	BLACK FS OR HALL FS

	LIGHT	MEDIUM	HEAVY	2 ND ALARM
FIRE RESPONSE	1 District Engine -or- 1 District I/A Module (If within 1mile of Moyie River or Hwy 95, send Engine)	1 District Engine -or- 1 District I/A Module (If within 1mile of Moyie River or Hwy 95, send Engine)	1 District Engine -or- 1 District I/A Module 1 Helicopter (If within 1mile of Moyie River or Hwy 95, send Engine)	1 I/A Module -or- 1 Engine if within 1 mile of Moyie River or Hwy 95 ICT4
TAC FREQ	PRI: ComUse 1 SEC: ComUse 2 TER: IDL DIR5	PRI: ComUse 1 SEC: ComUse 2 TER: IDL DIR5	PRI: ComUse 1 SEC: ComUse 2 TER: IDL DIR5	PRI: ComUse 1 SEC: ComUse 2 TER: IDL DIR5
MOVE-UPS			Contact DO	Maintain 1 Engine or I/A Module in Bonners Ferry. Contact DO for location.
CDC NOTIFICATIONS	BCFS if within 1 mile of border If applicable, via Boundary 911: Hall Mtn FD North Bench FD Curly Ck FD	BCFS if within 3 miles of border If applicable, via Boundary 911: Hall Mtn FD North Bench FD Curly Ck FD	BCFS if within 5 miles of border If applicable, via Boundary 911: Hall Mtn FD North Bench FD Curly Ck FD	
CONSIDERATIONS	Canadian assist if fire is threatening border VFD protection areas	Canadian assist if fire is threatening border VFD protection areas	Canadian assist if fire is threatening border VFD protection areas	Canadian assist if fire is threatening border VFD protection areas
HAZARDS	WUI Steep Narrow Roads/Long drive times Canadian border	WUI Steep Narrow Roads/Long drive times Canadian border	WUI Steep Narrow Roads/Long drive times Canadian border	WUI Steep Narrow Roads/Long drive times Canadian border
REMARKS	DO will contact District FMO and Line Officer Work with vfd's in their protection areas	DO will contact District FMO and Line Officer Work with vfd's in their protection areas	DO will contact District FMO and Line Officer Work with vfd's in their protection areas	DO will contact District FMO and Line Officer Work with vfd's in their protection areas

2022 CDC Runcards

Preplanned Dispatch Runcard for:

AGENCY	UNIT	DISPATCH BLOCK #	DISPATCH BLOCK NAME	FDRA	COMMAND REPEATER
USFS	D7	D7-6	KENO	NORTH MOUNTAINS	BLACK FS OR HALL FS

	LIGHT	MEDIUM	HEAVY	2 ND ALARM
FIRE RESPONSE	Contact DO	Closest Air Resource for Recon	Closest Air Resource for Recon	
TAC FREQ	PRI: ComUse 1 SEC: ComUse 2 TER: IDL DIR5	PRI: ComUse 1 SEC: ComUse 2 TER: IDL DIR5	PRI: ComUse 1 SEC: ComUse 2 TER: IDL DIR5	PRI: ComUse 1 SEC: ComUse 2 TER: IDL DIR5
MOVE-UPS				
CDC NOTIFICATIONS	BCFS if within 1 mile of border Kootenai NF if within 1 mile of border If applicable, via Boundary 911: Curly Ck FD	BCFS if within 3 miles of border Kootenai NF if within 1 mile of border If applicable, via Boundary 911: Curly Ck FD	BCFS if within 5 miles of border Kootenai NF if within 1 mile of border If applicable, via Boundary 911: Curly Ck FD	
CONSIDERATIONS	Logistics for firefighters Canadian assist if fire threatens border VFD protection area	Logistics for firefighters Canadian assist if fire threatens border VFD protection area	Logistics for firefighters Canadian assist if fire threatens border VFD protection area	
HAZARDS	Steep/Remote Terrain Canadian border	Steep/Remote Terrain Canadian border	Steep/Remote Terrain Canadian Border	Steep/Remote Terrain Canadian Border
REMARKS	DO will contact District FMO and Line Officer Work with VFD's if fire is within protection area	DO will contact District FMO and Line Officer Work with VFD's if fire is within protection area	DO will contact District FMO and Line Officer Work with VFD's if fire is within protection area	DO will contact District FMO and Line Officer Work with VFD's if fire is within protection area

2022 CDC Runcards

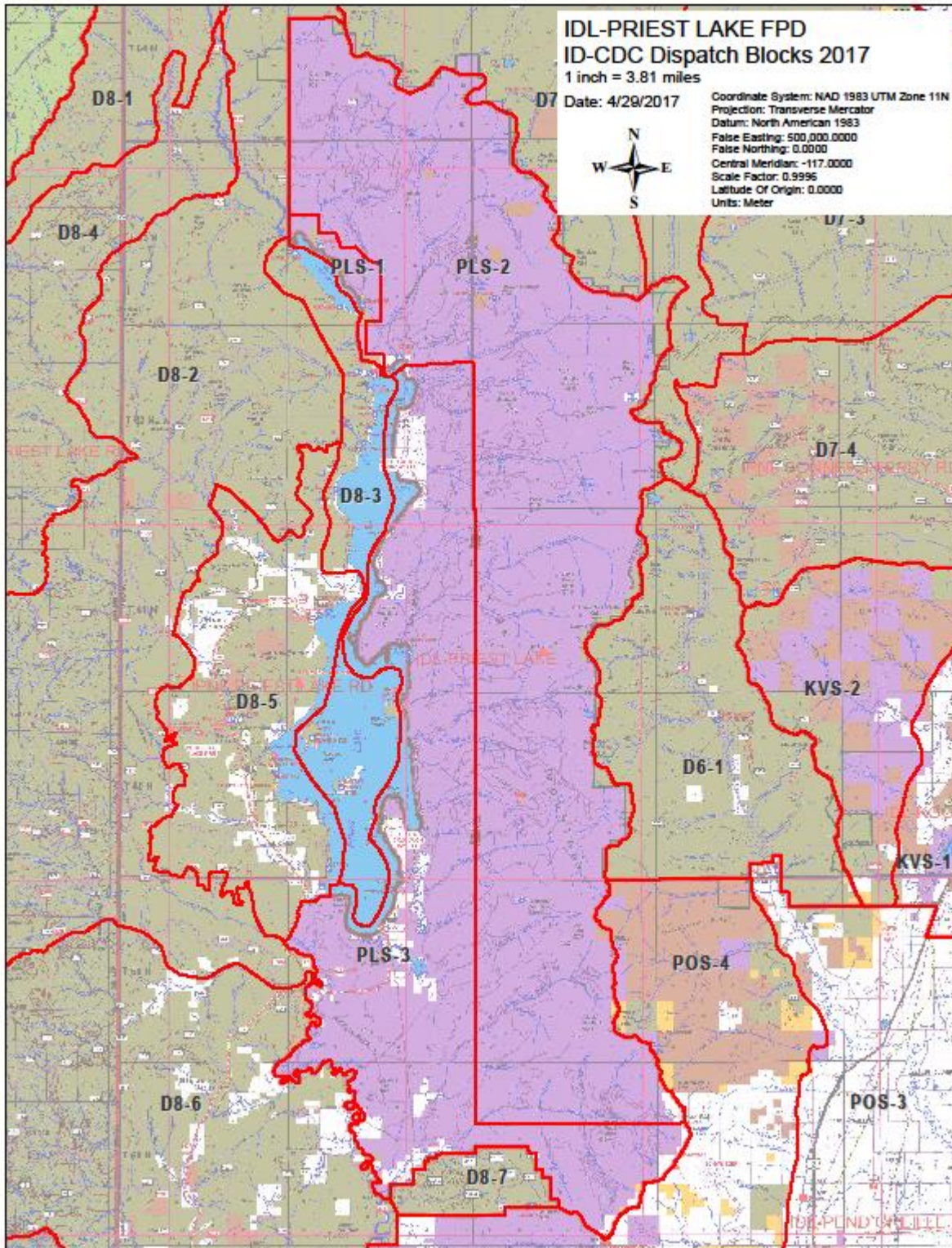
Preplanned Dispatch Runcard for:

AGENCY	UNIT	DISPATCH BLOCK #	DISPATCH BLOCK NAME	FDRA	COMMAND REPEATER
USFS	D7	D7-7	KATKA	NORTH MOUNTAINS	BLACK FS

	LIGHT	MEDIUM	HEAVY	2 ND ALARM
FIRE RESPONSE	1 District Engine -or- 1 District I/A Module	1 District Engine -or- 1 District I/A Module	1 Engine -or- 1 I/A Module 1 Type 3 Helicopter	1 Engine -or- 1 I/A Module
TAC FREQ	PRI: ComUse 1 SEC: ComUse 2 TER: IDL DIR5	PRI: ComUse 1 SEC: ComUse 2 TER: IDL DIR5	PRI: ComUse 1 SEC: ComUse 2 TER: IDL DIR5	PRI: ComUse 1 SEC: ComUse 2 TER: IDL DIR5
MOVE-UPS			Maintain 1 Engine or I/A Module in Bonners Ferry. Contact DO for location.	Maintain 1 Engine or I/A Module in Bonners Ferry. Contact DO for location.
CDC NOTIFICATIONS	Kootenai NF if within 1 mile of border If applicable, via Boundary 911: Paradise Valley FD	Kootenai NF if within 1 mile of border If applicable, via Boundary 911: Paradise Valley FD	Kootenai NF if within 1 mile of border If applicable, via Boundary 911: Paradise Valley FD	
CONSIDERATIONS	1 type 3 helicopter Black Mountain Radio Twrs	ICT4 Moving Engine/IA mod to Bonners Ferry Black Mountain Radio Twrs	ICT3 Seats Type 2 helicopter Black Mountain Radio Twrs	DO and CDC discuss logistics and prioritization
HAZARDS	WUI Narrow Roads Long Drive Times	WUI Narrow Roads Long Drive Times	WUI Narrow Roads Long Drive Times	WUI Narrow Roads Long Drive Times
REMARKS	DO will contact District FMO and Line Officer Work with Paradise valley vfd in their protection areas Determine tactics and strategies if within RNA. Contact Line Officer/NZ Botanist/Forest Ecologist	DO will contact District FMO and Line Officer Work with Paradise valley vfd in their protection areas Determine tactics and strategies if within RNA. Contact Line Officer/NZ Botanist/Forest Ecologist	DO will contact District FMO and Line Officer Work with Paradise valley vfd in their protection areas Determine tactics and strategies if within RNA. Contact Line Officer/NZ Botanist/Forest Ecologist	DO will contact District FMO and Line Officer Work with Paradise valley vfd in their protection areas

2022 CDC Runcards

PRIEST LAKE FPD



2022 CDC Runcards

STATION 11 INFORMATION

Primary Repeater	Lakeview IDL
Street Address	4053 Cavanaugh Bay Rd, Coolin
Receptionist/Frontliner	Yes, M-F 0730-1630
Cell Service	Great w/ Verizon
WIFI Service	NO
Yale key access?	NO
Alternate Standby Location(s)	Coolin Park
Access Instructions	Can stage up at shop, and contact Duty Officer
Nearest Fuel	Mac's (Priest River), Tamarack (Hwy 57 Priest Lake), Little Store (Hwy 57 Priest Lake), Priest Lake State Park (4 miles north of station)
Recommended Food Nearby	Ardy's, Moose Knuckle (Coolin), Millie's (Hwy 57 Priest Lake)
Nearest Fill-sites	Chase Lake, Cavanaugh Bay, Coolin Bay
Additional Information	Tent camping in bunkhouse yard, and behind shop, not a lot of stores so any special needs pickup in Priest River (ie. Tobacco, medications, etc..)



2022 CDC Runcards

Preplanned Dispatch Runcard for:

AGENCY	UNIT	DISPATCH BLOCK #	DISPATCH BLOCK NAME	FDRA	COMMAND REPEATER
IDL	PLS	PLS-1	UPPER LAKE	NORTH MOUNTAINS	LAKEVIEW

	LIGHT	MEDIUM	HEAVY	2 ND ALARM
FIRE RESPONSE	Contact D.O.	Contact D.O. Notify closest District Engine or I/A Module of potential fire	Contact D.O. Move closest Engine to PLS office	1 Helicopter
TAC FREQ	PRI: IDL Direct 4 SEC: IDL Direct 2 TER: Com Use 1	PRI: IDL Direct 4 SEC: IDL Direct 2 TER: Com Use 1	PRI: IDL Direct 4 SEC: IDL Direct 2 TER: Com Use 1	PRI: IDL Direct 4 SEC: IDL Direct 2 TER: Com Use 1
MOVE-UPS	None	None	Contact D.O. for Staging Location	Contact D.O. for Staging Location
CDC NOTIFICATIONS	D8 DO Bonner County 911 Request Nixle Alert via Bonner 911	D8 DO Bonner County 911 Request Nixle Alert via Bonner 911	D8 DO Bonner County 911 Request A Nixle Alert Via Bonner 911 Place Helicopter on standby	D8 DO Bonner County 911 Request A Nixle Alert Via Bonner 911 Place Helicopter on standby
CONSIDERATIONS	Access- Boat/ walk-in Coyote Camp Investigator NNFD Fire Boat Scenic Area	Scenic Area Access- Boat/ walk-in Coyote Camp Investigator NNFD Fire Boat	Air Attack Scenic Area Access- Boat/ walk-in Coyote Camp Investigator NNFD Fire Boat Spike Camp	IC and CDC discuss logistics Dozer/Excavator to open roads Access- Boat/ walk-in Coyote Camp Investigator NNFD Fire Boat
HAZARDS	Hazard trees (large diameter) Bears Boat Traffic Access	Hazard trees (large diameter) Bears Boat Traffic Access	Hazard trees (large diameter) Bears Boat Traffic Access	Hazard trees (large diameter) Bears Boat Traffic Access
REMARKS	Discretion with Heavy Equipment Blaster Retrieve engine and swap w/truck Boat out	Discretion with Heavy Equipment Blaster Retrieve engine and swap w/truck Boat out	D.O. contact <ul style="list-style-type: none"> • Area Manager • Bureau D.O. • Local media • Parks 	D.O. contact <ul style="list-style-type: none"> • Area Manager • Bureau D.O. • Local media • Parks

2022 CDC Runcards

Preplanned Dispatch Runcard for:

AGENCY	UNIT	DISPATCH BLOCK #	DISPATCH BLOCK NAME	FDRA	COMMAND REPEATER
IDL	PLS	PLS-2	CREST	NORTH MOUNTAINS	LAKEVIEW

	LIGHT	MEDIUM	HEAVY	2 ND ALARM
FIRE RESPONSE	1 Engine	1 Engine	2 Engines 1 Water Tender FW/AFW if available	1 I/A Module 1 Helicopter
TAC FREQ	PRI: IDL Direct 4 SEC: IDL Direct 2 TER: Com Use 1	PRI: IDL Direct 4 SEC: IDL Direct 2 TER: Com Use 1	PRI: IDL Direct 4 SEC: IDL Direct 2 TER: Com Use 1	PRI: IDL Direct 4 SEC: IDL Direct 2 TER: Com Use 1
MOVE-UPS	None	None	Contact D.O. for Staging location	Contact D.O. for Staging location
CDC NOTIFICATIONS	Bonner County 911 Request Nixle Alert via Bonner 911	Bonner County 911 Request Nixle Alert via Bonner 911 Place Helicopter on Standby	D6, D7, D8 D.O. Bonner County 911 Request Nixle Alert via Bonner 911 Place Helicopter on Standby	D6, D7, D8 D.O. Bonner County 911 Request Nixle Alert via Bonner 911 Place SEAT/ Scooper on Standby
CONSIDERATIONS	Coyote Camp Hazard Trees/Blaster Investigator Bears Lookout Towers	Active Logging Tender Coyote Camp Investigator	Heavy Equipment Spike Camp Investigator	Air Attack IC & CDC Discuss Logistics 20 Person Hand Crew
HAZARDS	Driving Recreation Travel Trees Bears Access	Driving Recreation Travel Trees Bears Access	Driving Recreation Travel Trees Bears Access	Driving Recreation Travel Trees Bears Access
REMARKS	Private Holdings -Stimson -Kent Lake Notify Purchaser REP for Logging if needed Possible movement of logging equipment	Private Holdings -Stimson -Kent Lake Notify Purchaser REP for Logging if needed Possible movement of logging equipment	D.O. Contact <ul style="list-style-type: none"> Area Manager Bureau D.O. Local media Parks 	D.O. Contact <ul style="list-style-type: none"> Area Manager Bureau D.O. Local media Parks

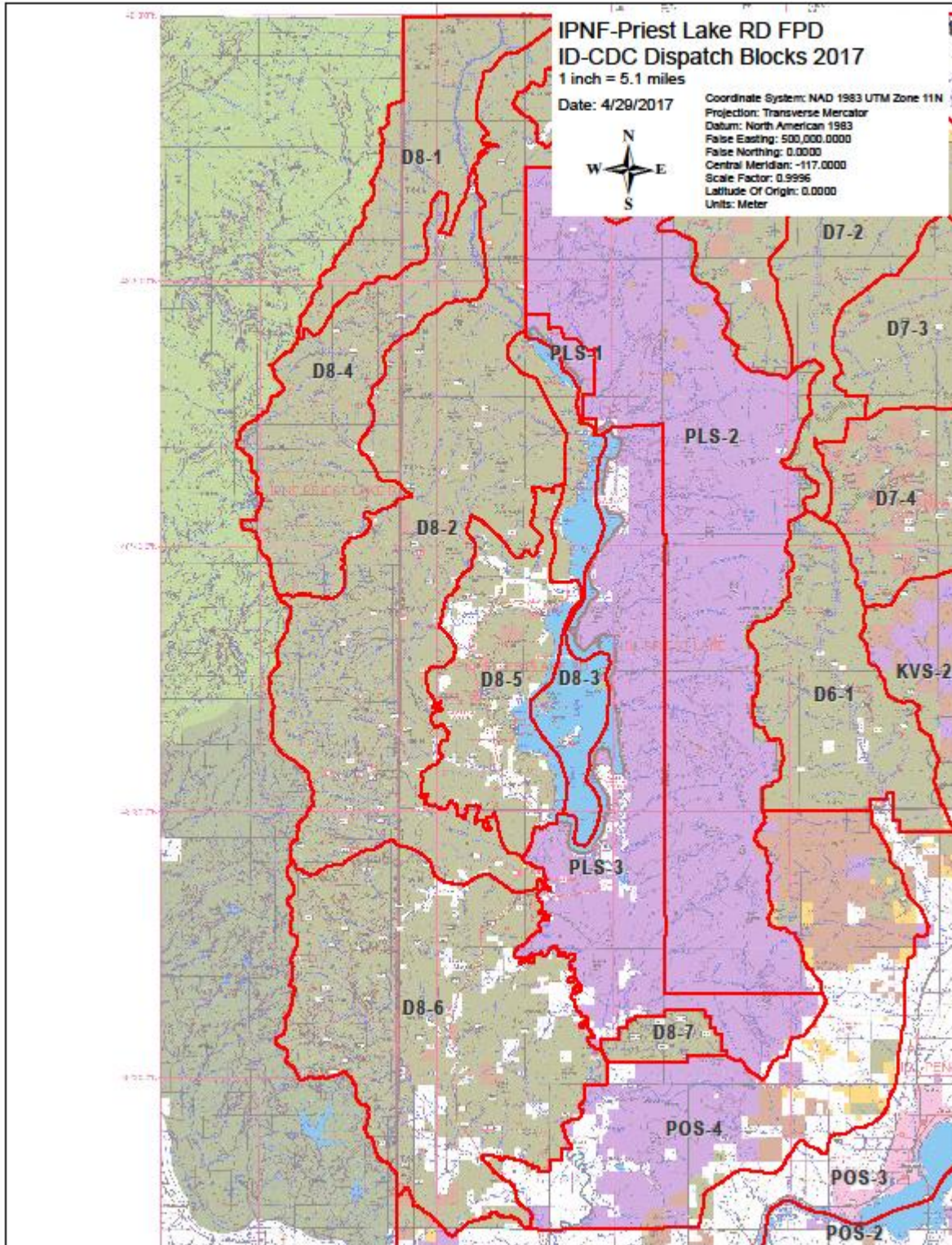
2022 CDC Runcards

Preplanned Dispatch Runcard for:

AGENCY	UNIT	DISPATCH BLOCK #	DISPATCH BLOCK NAME	FDRA	COMMAND REPEATER
IDL	PLS	PLS-3	PLS WUI	NORTH MOUNTAINS	LAKEVIEW

	LIGHT	MEDIUM	HEAVY	2 ND ALARM
FIRE RESPONSE	Contact D.O.	1 Engine	2 Engines 1 Water Tender FW/AFW if available	1 Helicopter
TAC FREQ	PRI: IDL Direct 4 SEC: IDL Direct 2 TER: Com Use 1	PRI: IDL Direct 4 SEC: IDL Direct 2 TER: Com Use 1	PRI: IDL Direct 4 SEC: IDL Direct 2 TER: Com Use 1	PRI: IDL Direct 4 SEC: IDL Direct 2 TER: Com Use 1
MOVE-UPS	None	None	Contact D.O. for Staging Location	Contact D.O. Staging Location
CDC NOTIFICATIONS	Bonner County 911 Request Nixle Alert via Bonner 911	Bonner County 911 Request Nixle Alert via Bonner 911 Place Helicopter on Standby	D8 DO Bonner County 911 Request Nixle Alert via Bonner 911 Place Helicopter on Standby	D8 DO Bonner County 911 Request Nixle Alert via Bonner 911 Place SEAT on Standby Place Scooper on Standby
CONSIDERATIONS	Investigator Northern Lights Contact Schewitzer Contact Sewer District Kinner Knob Comm. Site Cougar Creek water Assoc. Experimental Forest	Investigator Northern Lights Contact Schewitzer Contact Sewer District Kinner Knob Comm. Site Cougar Creek water Assoc. Experimental Forest	Rural Dept. Tenders Heavy Equipment Spike Camp	IC & CDC discuss logistics 1- 20 Person hand crew
HAZARDS	WUI Hazards Recreational Travel Driving	WUI Hazards Recreational Travel Driving	WUI Hazards Recreational Travel Driving	WUI Hazards Recreational Travel Driving
REMARKS	Logging- Call Purchaser Rep.	Logging- Call Purchaser Rep.	D.O. contact <ul style="list-style-type: none"> • Area Manager • Bureau D.O. • Local media • Parks 	D.O. contact <ul style="list-style-type: none"> • Area Manager • Bureau D.O. • Local media • Parks

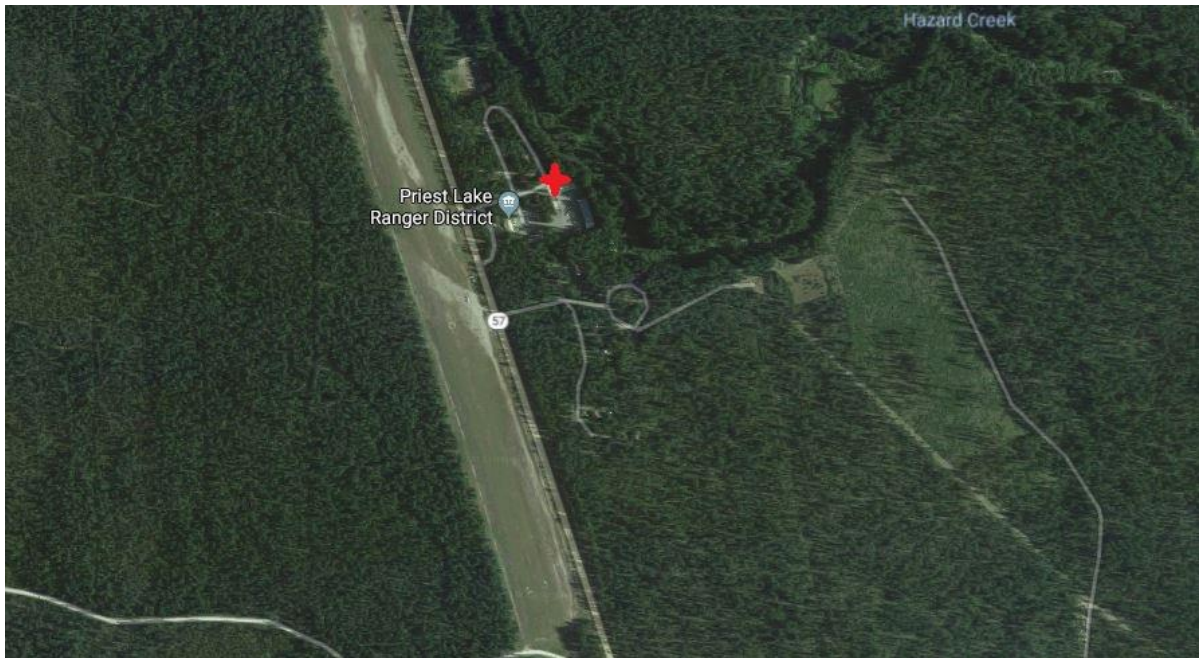
PRIEST LAKE RANGER DISTRICT



2022 CDC Runcards

STATION 8 INFORMATION

Primary Repeater	Horton FS
Street Address	32203 Hwy 57, Nordman
Receptionist/Frontliner	Yes, M-F 0730-1600
Cell Service	Yes, but can be spotty
WIFI Service	No
Yale key access?	No
Alternate Standby Location(s)	No
Access Instructions	Keypad on Fire cache door, Call DO
Nearest Fuel	Either Gull or Conoco stations
Recommended Food Nearby	Millies, 5 miles S of station or Nordman 6 miles North
Nearest Fill-sites	Hydrant or stand pipe at station
Additional Information	



2022 CDC Runcards

Preplanned Dispatch Runcard for:

AGENCY	UNIT	DISPATCH BLOCK #	DISPATCH BLOCK NAME	FDRA	COMMAND REPEATER
FS	D8	D8-1	SALMO-PRIEST	NORTH MOUNTAINS	SADDLE

	LIGHT	MEDIUM	HEAVY	2 ND ALARM
FIRE RESPONSE	Contact D.O.	Contact D.O. Use closest available air resource for more accurate location	Contact D.O. Use closest available air resource for more accurate location	None
TAC FREQ	PRI: Com use 2 SEC: Com Use 3 TER: Com Use 4	PRI: Com use 2 SEC: Com Use 3 TER: Com Use 4	PRI: Com use 2 SEC: Com Use 3 TER: Com Use 4	
MOVE-UPS	None	None	None	
CDC NOTIFICATIONS	NEWICC Dispatch Canada if fire is within 1 mile of border	NEWICC Dispatch Canada if fire is within 3 mile of border	NEWICC Dispatch Canada if fire is within 5 mile of border	
CONSIDERATIONS	Contact District Ranger RNA is Caribou habitat	Contact District Ranger RNA is Caribou habitat	Contact District Ranger RNA is Caribou habitat	
HAZARDS	Access, Grizzly bears	Access, Grizzly bears	Access, Grizzly bears	
REMARKS	Need Forest Supervisor approval to land or use chainsaws in wilderness.	Need Forest Supervisor approval to land or use chainsaws in wilderness.	Need Forest Supervisor approval to land or use chainsaws in wilderness.	

2022 CDC Runcards

Preplanned Dispatch Runcard for:

AGENCY	UNIT	DISPATCH BLOCK #	DISPATCH BLOCK NAME	FDRA	COMMAND REPEATER
FS	D8	D8-2	PRIEST LAKE NORTH	NORTH MOUNTAINS	SADDLE

	LIGHT	MEDIUM	HEAVY	2 ND ALARM
FIRE RESPONSE	1 Engine -or- 1 I/A Module	1 Engine -or- 1 I/A Module	1 Engine -or- 1 I/A Module 1 Type 3 Helicopter	None
TAC FREQ	PRI: Com use 2 SEC: Com Use 3 TER: Com Use 4	PRI: Com use 2 SEC: Com Use 3 TER: Com Use 4	PRI: Com use 2 SEC: Com Use 3 TER: Com Use 4	
MOVE-UPS	None	None	None	
CDC NOTIFICATIONS	NEWICC Dispatch If within 1 mile of Colville N.F. Boundary. Canada if fire is within 1 mile of border	NEWICC Dispatch If within 1 mile of Colville N.F. Boundary. Canada if fire is within 3 miles of border	NEWICC Dispatch If within 1 mile of Colville N.F. Boundary. Canada if fire is within 5 miles of border	
CONSIDERATIONS	Private land in Washington RNA's, Old Growth WFM	Private land in Washington RNA's, Old Growth WFM	Private land in Washington RNA's, Old Growth WFM	
HAZARDS	Access, Grizzly bears	Access, Grizzly bears	Access, Grizzly bears	
REMARKS				

2022 CDC Runcards

Preplanned Dispatch Runcard for:

AGENCY	UNIT	DISPATCH BLOCK #	DISPATCH BLOCK NAME	FDRA	COMMAND REPEATER
FS	D8	D8-3	ISLANDS / UPPER LAKE	NORTH MOUNTAINS	HORTON

	LIGHT	MEDIUM	HEAVY	2 ND ALARM
FIRE RESPONSE	Contact D.O.	Contact D.O. Notify closest ground Module of potential fire	Contact D.O. Move closest ground Module to Station 8	1 Helicopter
TAC FREQ	PRI: Com Use 2 SEC: Com Use 3 TER: Com Use 4	PRI: Com Use 2 SEC: Com Use 3 TER: Com Use 4	PRI: Com Use 2 SEC: Com Use 3 TER: Com Use 4	
MOVE-UPS	None	None	None	
CDC NOTIFICATIONS	Bonner 911	Bonner 911	Bonner 911	
CONSIDERATIONS	Boat Operator RNA's	Boat Operator RNA's	Boat Operator RNA's	
HAZARDS	Boat Operations Access	Boat Operations Access	Boat Operations Access	
REMARKS				

2022 CDC Runcards

Preplanned Dispatch Runcard for:

AGENCY	UNIT	DISPATCH BLOCK #	DISPATCH BLOCK NAME	FDRA	COMMAND REPEATER
FS	D8	D8-4	HIGH ROCK	NORTH MOUNTAINS	SADDLE OR HORTON

	LIGHT	MEDIUM	HEAVY	2 ND ALARM
FIRE RESPONSE	Closest air resource for more accurate location.	1 Type 3 helicopter 1 I/A Module (Preferred) -or- 1 Engine	1 Type 3 helicopter 1 I/A Module (Preferred) -or- 1 Engine	Air Attack
TAC FREQ	PRI: Com Use 2 SEC: Com Use 3 TER: Com Use 4	PRI: Com Use 2 SEC: Com Use 3 TER: Com Use 4	PRI: Com Use 2 SEC: Com Use 3 TER: Com Use 4	
MOVE-UPS	None	None	None	
CDC NOTIFICATIONS	NEWICC Dispatch if within 1 mile of Colville N.F. boundary	NEWICC Dispatch if within 1 mile of Colville N.F. boundary	NEWICC Dispatch if within 1 mile of Colville N.F. boundary	
CONSIDERATIONS	Caribou habitat Air Attack WFM	Caribou habitat Air Attack WFM	Caribou habitat Air Attack WFM	
HAZARDS	Access Grizzly bears Landing Zones	Access Grizzly bears Landing Zones	Access Grizzly bears Landing Zones	
REMARKS	Consider Suppression Strategies	Consider Suppression Strategies	Consider Suppression Strategies	

2022 CDC Runcards

Preplanned Dispatch Runcard for:

AGENCY	UNIT	DISPATCH BLOCK #	DISPATCH BLOCK NAME	FDRA	COMMAND REPEATER
FS	D8	D8-5	PRIEST LAKE WEST SIDE	NORTH MOUNTAINS	HORTON

	LIGHT	MEDIUM	HEAVY	2 ND ALARM
FIRE RESPONSE	1 District ICT4 Check for burn permit	1 District ICT4 1 Engine Check for burn permit	1 District ICT4 1 Engine 1 I/A Module Check for burn permit	1 Engine 1 I/A Module
TAC FREQ	PRI: Com Use 2 SEC: Com Use 3 TER: Com Use 4	PRI: Com Use 2 SEC: Com Use 3 TER: Com Use 4	PRI: Com Use 2 SEC: Com Use 3 TER: Com Use 4	
MOVE-UPS	None	None	None	
CDC NOTIFICATIONS	Bonner 911	Bonner 911	Bonner 911 Put helicopter on standby.	
CONSIDERATIONS	RNA Unified Command	RNA Unified Command	RNA Unified Command	
HAZARDS	WUI	WUI	WUI	
REMARKS	Local VFD usually first on scene	Local VFD usually first on scene	Local VFD usually first on scene	

2022 CDC Runcards

Preplanned Dispatch Runcard for:

AGENCY	UNIT	DISPATCH BLOCK #	DISPATCH BLOCK NAME	FDRA	COMMAND REPEATER
FS	D8	D8-6	PRIEST LAKE SOUTH	NORTH MOUNTAINS	SANDPOINT BALDY

	LIGHT	MEDIUM	HEAVY	2 ND ALARM
FIRE RESPONSE	1 Engine -or- 1 I/A Module	1 Engine -or- 1 I/A Module	1 Engine 1 I/A Module -or- 2n'd Engine	1 Helicopter
TAC FREQ	PRI: Com Use 2 SEC: Com Use 3 TER: Com Use 4	PRI: Com Use 2 SEC: Com Use 3 TER: Com Use 4	PRI: Com Use 2 SEC: Com Use 3 TER: Com Use 4	
MOVE-UPS	None	None	None	
CDC NOTIFICATIONS	NEWICC Dispatch if within 1 mile of the Colville N.F. boundary Bonner 911	NEWICC Dispatch if within 1 mile of the Colville N.F. boundary Bonner 911	NEWICC Dispatch if within 1 mile of the Colville N.F. boundary Bonner 911 Place 1 Helicopter on Standby	
CONSIDERATIONS	RNA's Private land in Washington DNR Protection	RNA's Private land in Washington DNR Protection	RNA's Private land in Washington DNR Protection	
HAZARDS	Scattered WUI	Scattered WUI	Scattered WUI	
REMARKS				

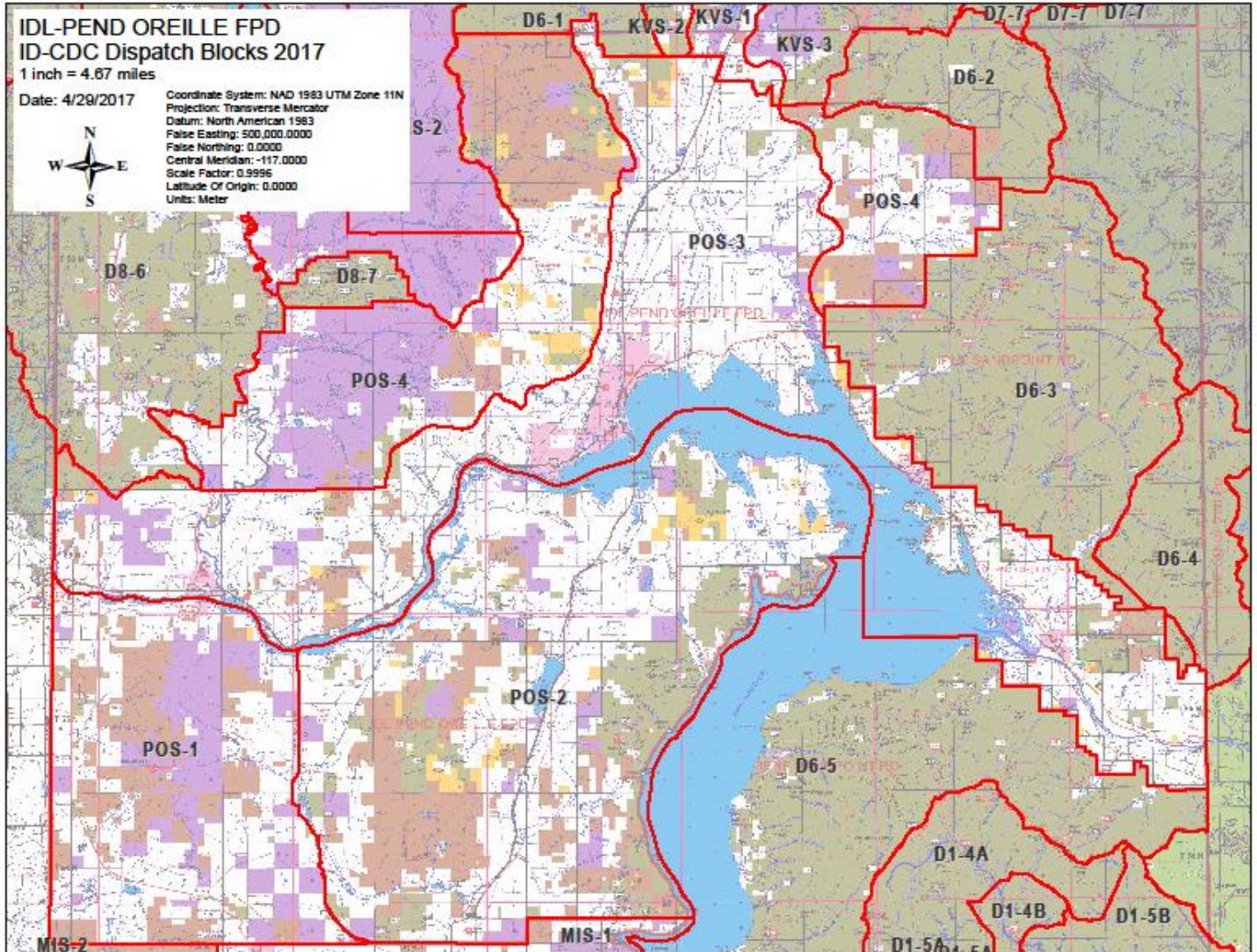
2022 CDC Runcards

Preplanned Dispatch Runcard for:

AGENCY	UNIT	DISPATCH BLOCK #	DISPATCH BLOCK NAME	FDRA	COMMAND REPEATER
FS	D8	D8-7	EXPERIMENTAL FOREST	NORTH MOUNTAINS	SANDPOINT BALDY

	LIGHT	MEDIUM	HEAVY	2 ND ALARM
FIRE RESPONSE	1 District Engine -or- 1 District I/A Module	1 District Engine -or- 1 District I/A Module	1 Engine 1 I/A Module District overhead if no other FS resources responding	1 Helicopter Air Attack
TAC FREQ	PRI: Com Use 2 SEC: Com Use 3 TER: Com Use 4	PRI: Com Use 2 SEC: Com Use 3 TER: Com Use 4	PRI: Com Use 2 SEC: Com Use 3 TER: Com Use 4	
MOVE-UPS	None	None	None	
CDC NOTIFICATIONS	None	Bonner 911 PLS DO POS DO	Bonner 911 PLS DO POS DO	
CONSIDERATIONS	Forest study areas RNA's Rocky Mountain Research Station	Forest study areas RNA's Rocky Mountain Research Station	Forest study areas RNA's Rocky Mountain Research Station	
HAZARDS	High density of snags Propane Tanks	High density of snags Propane Tanks	High density of snags Propane Tanks	
REMARKS	Line Officer contact Rocky Mtn Research Station	Line Officer contact Rocky Mtn Research Station	Line Officer contact Rocky Mtn Research Station	

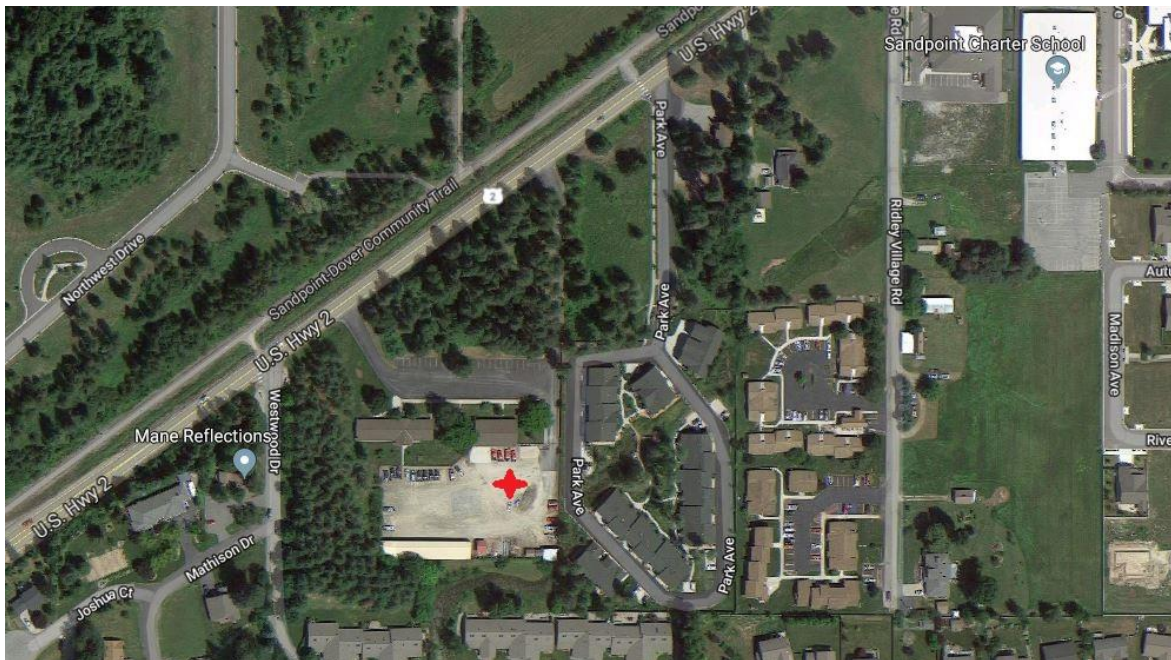
PEND ORIELLE FPD



2022 CDC Runcards

STATION 23 INFORMATION

Primary Repeater	Schweitzer IDL
Street Address	2550 Hwy 2 West, Sandpoint
Receptionist/Frontliner	Yes, M-F 0730-1700
Cell Service	Good
WIFI Service	No
Yale key access?	No
Alternate Standby Location(s)	Travers Park or Memorial Field
Access Instructions	
Nearest Fuel	Dairy Depot
Recommended Food Nearby	Super 1 Foods, Safeway, Walmart
Nearest Fill-sites	At station or local boat launch
Additional Information	



2022 CDC Runcards

Preplanned Dispatch Runcard for:

AGENCY	UNIT	DISPATCH BLOCK #	DISPATCH BLOCK NAME	FDRA	COMMAND REPEATER
IDL	POS	POS-1	HOODOO	NORTH VALLEY	HOODOO

	LIGHT	MEDIUM	HEAVY	2 ND ALARM
FIRE RESPONSE	Call Duty Officer	1 District Engine	1 District Engine 2'nd Engine ICT4 1 Helicopter	Retardant or FireBoss Air Attack (if Helicopter has been ordered also)
TAC FREQ	PRI: IDL DIR 2 SEC: IDL DIR 3	PRI: IDL DIR 2 SEC: IDL DIR 3	PRI: IDL DIR 2 SEC: IDL DIR 3	
MOVE-UPS		Discuss with DO	Maintain 1 Engine in Sandpoint	
CDC NOTIFICATIONS	Notify Bonner County 911	Notify Bonner County 911	Notify Bonner County 911	
CONSIDERATIONS	INVF	INVF Dozer Water Tender	INVF Dozer Water Tender	
HAZARDS	WUI	WUI	WUI	
REMARKS				

2022 CDC Runcards

Preplanned Dispatch Runcard for:

AGENCY	UNIT	DISPATCH BLOCK #	DISPATCH BLOCK NAME	FDRA	COMMAND REPEATER
IDL	POS	POS-2	95 CORRIDOR	NORTH VALLEY	SCHWEITZER IDL

	LIGHT	MEDIUM	HEAVY	2 ND ALARM
FIRE RESPONSE	Call Duty Officer	1 District Engine	1 District Engine 2'nd Engine ICT4 1 Helicopter	Retardant or FireBoss Air Attack (if Helicopter has been ordered also)
TAC FREQ	PRI: IDL DIR 2 SEC: IDL DIR 3	PRI: IDL DIR 2 SEC: IDL DIR 3	PRI: IDL DIR 2 SEC: IDL DIR 3	
MOVE-UPS		Discuss with DO	Maintain 1 Engine in Sandpoint	
CDC NOTIFICATIONS	Notify Bonner County 911	Notify Bonner County 911	Notify Bonner County 911	
CONSIDERATIONS	INVF	INVF Dozer Water Tender	INVF Dozer Water Tender	
HAZARDS	WUI	WUI	WUI	
REMARKS				

2022 CDC Runcards

Preplanned Dispatch Runcard for:

AGENCY	UNIT	DISPATCH BLOCK #	DISPATCH BLOCK NAME	FDRA	COMMAND REPEATER
IDL	POS	POS-3	POL NORTH	NORTH VALLEY	SCHWEITZER IDL

	LIGHT	MEDIUM	HEAVY	2 ND ALARM
FIRE RESPONSE	Call Duty Officer	1 District Engine	1 District Engine 2'nd Engine ICT4 1 Helicopter	Retardant or FireBoss Air Attack (if Helicopter has been ordered also)
TAC FREQ	PRI: IDL DIR 2 SEC: IDL DIR 3	PRI: IDL DIR 2 SEC: IDL DIR 3	PRI: IDL DIR 2 SEC: IDL DIR 3	
MOVE-UPS		Discuss with DO	Maintain 1 Engine in Sandpoint	
CDC NOTIFICATIONS	Notify Bonner County 911	Notify Bonner County 911	Notify Bonner County 911	
CONSIDERATIONS	INVF	INVF Dozer Water Tender	INVF Dozer Water Tender	
HAZARDS	WUI	WUI	WUI	
REMARKS				

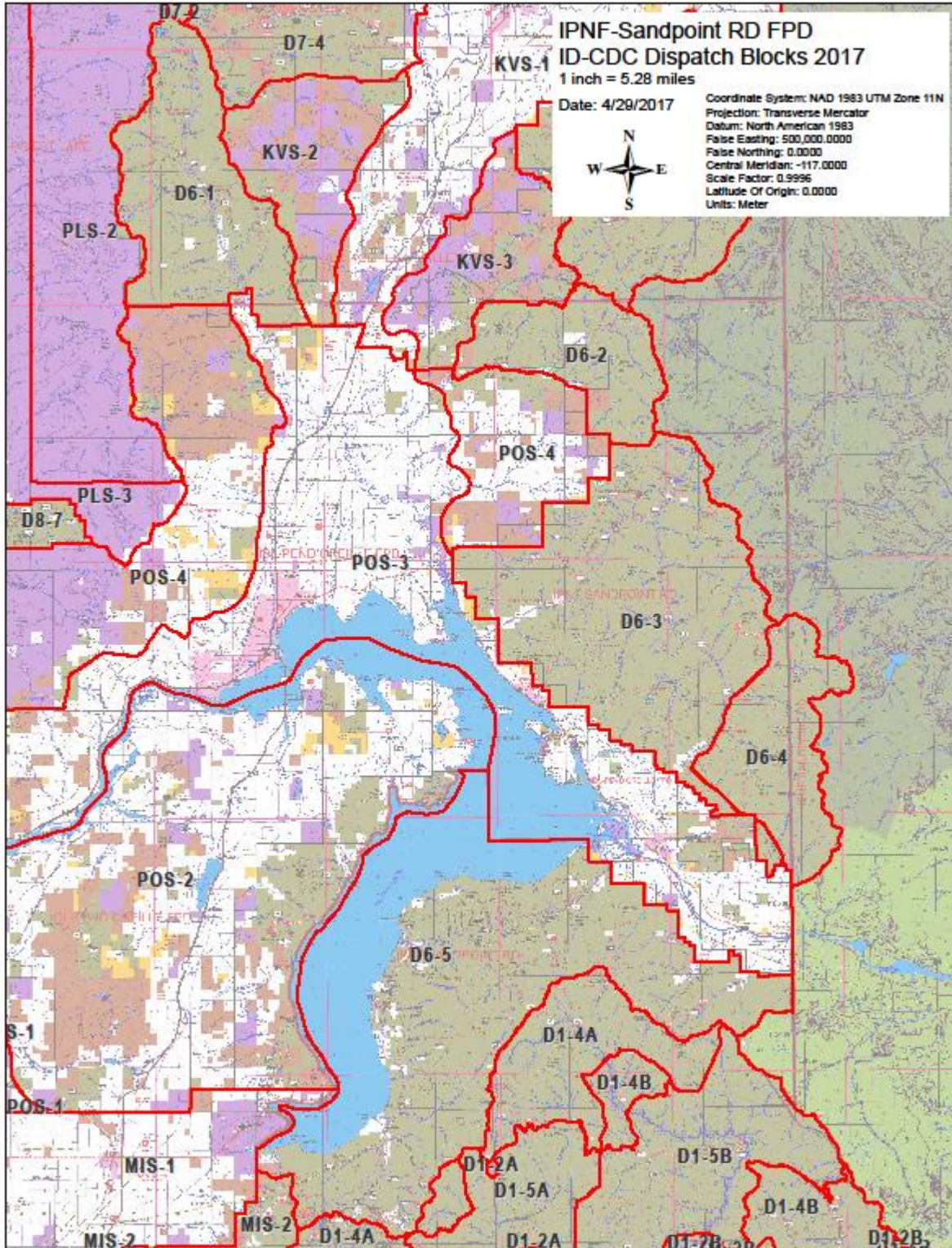
2022 CDC Runcards

Preplanned Dispatch Runcard for:

AGENCY	UNIT	DISPATCH BLOCK #	DISPATCH BLOCK NAME	FDRA	COMMAND REPEATER
IDL	POS	POS-4	POL MOUNTAINS	NORTH MOUNTAINS	SCHWEITZER IDL

	LIGHT	MEDIUM	HEAVY	2 ND ALARM
FIRE RESPONSE	Call Duty Officer	1 District Engine	1 District Engine 2'nd Engine ICT4 1 Helicopter	Retardant or FireBoss Air Attack (if Helicopter has been ordered also)
TAC FREQ	PRI: IDL DIR 2 SEC: IDL DIR 3	PRI: IDL DIR 2 SEC: IDL DIR 3	PRI: IDL DIR 2 SEC: IDL DIR 3	
MOVE-UPS		Discuss with DO	Maintain 1 Engine in Sandpoint	
CDC NOTIFICATIONS	Notify Bonner County 911	Notify Bonner County 911	Notify Bonner County 911	
CONSIDERATIONS	INVF	INVF Dozer Water Tender	INVF Dozer Water Tender	
HAZARDS	WUI	WUI	WUI	
REMARKS				

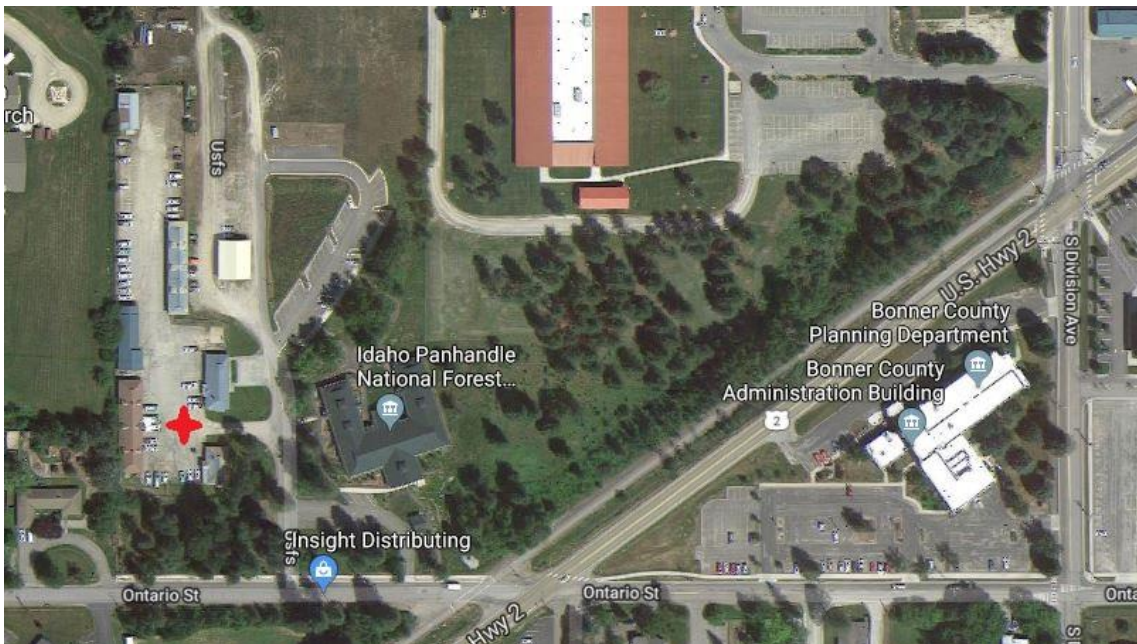
SANDPOINT RANGER DISTRICT



2022 CDC Runcards

STATION 6 INFORMATION

Primary Repeater	Sandpoint Baldy FS
Street Address	1602 Ontario Street, Sandpoint
Receptionist/Frontliner	Yes, M-F 0830-1630
Cell Service	Excellent
WIFI Service	Yes, for government monitored devices.
Yale key access?	Yes, except for main office
Alternate Standby Location(s)	
Access Instructions	Call DO for access to main office
Nearest Fuel	Dairy Depot located at: 1105 Michigan St. Sandpoint, ID 83864
Recommended Food Nearby	Subway located at: 1319 U.S. Hwy 2 Ste B Westpoint Plaza at Sandpoint, ID 83864
Nearest Fill-sites	Inside our F.S. compound next to the hose rack.
Additional Information	Feel free to use the fire crew room (the old fire dispatch office) which contains a bathroom, shower, refrigerator, microwave, conference room and computer hook-ups.



2022 CDC Runcards

Preplanned Dispatch Runcard for:

AGENCY	UNIT	DISPATCH BLOCK #	DISPATCH BLOCK NAME	FDRA	COMMAND REPEATER
FS	D6	D6-1	PACK RIVER	NORTH MOUNTAINS	SANDPOINT BALDY FS

	LIGHT	MEDIUM	HEAVY	2 ND ALARM
FIRE RESPONSE	1 Engine -or- 1 I/A Module	1 Engine -or- 1 I/A Module	1 Engine -or- 1 I/A Module 1 Helicopter	1 Engine -or- 1 I/A Module ICT4
TAC FREQ	PRI: COM USE 2 SEC: COM USE 3 TER: COM USE 4	PRI: COM USE 2 SEC: COM USE 3 TER: COM USE 4	PRI: COM USE 2 SEC: COM USE 3 TER: COM USE 4	PRI: COM USE 2 SEC: COM USE 3 TER: COM USE 4
MOVE-UPS	None	None	Contact Duty Officer	Contact Duty Officer
CDC NOTIFICATIONS	Boundary County 911 or Bonner County 911 if within 1 mile of private.	Boundary County 911 or Bonner County 911 if within 1 mile of private. Put Helicopter on Standby.	Bonner County 911 Boundary County 911	
CONSIDERATIONS	Limited access	Trail closures Limited access	ICT4 Trail closures Limited access Consider additional Engine in identified WUI area	
HAZARDS	High recreation area with limited ingress/egress. WUI on South end.	High recreation area with limited ingress/egress. WUI on South end.	High recreation area with limited ingress/egress. WUI on South end.	High recreation area with limited ingress/egress. WUI on South end.
REMARKS	DO will contact Zone FMO and Line Officer. Closest access is through Bonner County.	DO will contact Zone FMO and Line Officer. Closest access is through Bonner County.	DO will contact Zone FMO and Line Officer. Closest access is through Bonner County.	DO will contact Zone FMO and Line Officer. Closest access is through Bonner County.

2022 CDC Runcards

Preplanned Dispatch Runcard for:

AGENCY	UNIT	DISPATCH BLOCK #	DISPATCH BLOCK NAME	FDRA	COMMAND REPEATER
FS	D6	D6-2	GROUSE CREEK	NORTH MOUNTAINS	FS LUNCH PEAK

	LIGHT	MEDIUM	HEAVY	2 ND ALARM
FIRE RESPONSE	1 Engine -or- 1 I/A Module	1 Engine -or- 1 I/A Module	1 Engine -or- 1 I/A Module 1 Helicopter	1 Engine -or- 1 I/A Module 1 ICT4
TAC FREQ	PRI: COM USE 2 SEC: COM USE 3 TER: COM USE 4	PRI: COM USE 2 SEC: COM USE 3 TER: COM USE 4	PRI: COM USE 2 SEC: COM USE 3 TER: COM USE 4	PRI: COM USE 2 SEC: COM USE 3 TER: COM USE 4
MOVE-UPS	None	None	Contact Duty Officer	Contact Duty Officer
CDC NOTIFICATIONS	If within 1 mile of private, call Boundary County 911 or Bonner County 911.	If within 1 mile of private, call Boundary County 911 or Bonner County 911. Put helicopter on Standby.	If within 1 mile of private, call Boundary County 911 or Bonner County 911. Put helicopter on Standby.	If within 1 mile of private, call Boundary County 911 or Bonner County 911. Put helicopter on Standby.
CONSIDERATIONS	Limited access	Trail closures Limited access	ICT4 Trail closures Limited access	
HAZARDS	Checker-board private in-holdings.	Checker-board private in-holdings.	Checker-board private in-holdings.	Checker-board private in-holdings.
REMARKS	DO will contact Zone FMO and Line Officer	DO will contact Zone FMO and Line Officer	DO will contact Zone FMO and Line Officer	DO will contact Zone FMO and Line Officer

2022 CDC Runcards

Preplanned Dispatch Runcard for:

AGENCY	UNIT	DISPATCH BLOCK #	DISPATCH BLOCK NAME	FDRA	COMMAND REPEATER
FS	D6	D6-3	BIG LIGHTNING	NORTH MOUNTAINS	LUNCH PEAK FS

	LIGHT	MEDIUM	HEAVY	2 ND ALARM
FIRE RESPONSE	1 Engine -or- 1 I/A Module	1 Engine -or- 1 I/A Module	1 Engine -or- 1 I/A Module 1 Helicopter	1 Engine -or- 1 I/A Module ICT4
TAC FREQ	PRI: COM USE 2 SEC: COM USE 3 TER: COM USE 4	PRI: COM USE 2 SEC: COM USE 3 TER: COM USE 4	PRI: COM USE 2 SEC: COM USE 3 TER: COM USE 4	PRI: COM USE 2 SEC: COM USE 3 TER: COM USE 4
MOVE-UPS	None	Contact Duty Officer	Contact Duty Officer	Contact Duty Officer
CDC NOTIFICATIONS	Bonner County 911	Bonner County 911	Bonner County 911	Bonner County 911
CONSIDERATIONS	Limited access May be opportunities for fire use.	Limited access May be opportunities for fire use Trail closures Aerial recon WFM	Limited access May be opportunities for fire use ICT4 Trail closures Consider additional engine in identified WUI areas Aerial recon WFM	Limited access May be opportunities for fire use ICT3 Trail closures
HAZARDS	WUI	WUI	WUI	WUI
REMARKS	DO will contact Zone FMO and Line Officer The upper portions of this block are remote with longer access times. The lower portions have WUI.	DO will contact Zone FMO and Line Officer The upper portions of this block are remote with longer access times. The lower portions have WUI.	DO will contact Zone FMO and Line Officer The upper portions of this block are remote with longer access times. The lower portions have WUI.	DO will contact Zone FMO and Line Officer The upper portions of this block are remote with longer access times. The lower portions have WUI.

2022 CDC Runcards

Preplanned Dispatch Runcard for:

AGENCY	UNIT	DISPATCH BLOCK #	DISPATCH BLOCK NAME	FDRA	COMMAND REPEATER
FS	D6	D6-4	SCOTCHMAN	NORTH MOUNTAINS	LITTLE BLACKTAIL FS OR LUNCH PK

	LIGHT	MEDIUM	HEAVY	2 ND ALARM
FIRE RESPONSE	Contact DO	Contact DO	ICT4 1 Engine -or- 1 I/A Module 1 Helicopter	1 Engine -or- 1 I/A Module 1 STL or above
TAC FREQ	PRI: COM USE 2 SEC: COM USE 3 TER: COM USE 4	PRI: COM USE 2 SEC: COM USE 3 TER: COM USE 4	PRI: COM USE 2 SEC: COM USE 3 TER: COM USE 4	PRI: COM USE 2 SEC: COM USE 3 TER: COM USE 4
MOVE-UPS	No	Contact Duty Officer	Contact Duty Officer	Contact Duty Officer
CDC NOTIFICATIONS	None	Bonner County 911 Put helicopter on standby	Kootenai N.F. Sanders County 911 Bonner County 911	Bonner County 911
CONSIDERATIONS	Aerial recon Most of this Response Zone is located within the Scotchman proposed wilderness. Contains an RNA WFM	ICT4 Aerial recon Most of this Response Zone is located within the Scotchman proposed wilderness Trail Closures. Contains an RNA WFM	ICT3 Aerial recon Most of this Response Zone is located within the Scotchman proposed wilderness Trail Closures. Contains an RNA WFM	ICT3 Aerial recon Most of this Response Zone is located within the Scotchman proposed wilderness Trail Closures. Contains an RNA WFM
HAZARDS	WUI is located on the Southwestern boundary	WUI is located on the Southwestern boundary	WUI is located on the Southwestern boundary	WUI is located on the Southwestern boundary
REMARKS	DO will contact Zone FMO and Line Officer. No mechanized equipment within the Scotchman Proposed Wilderness Boundary besides chainsaws. Need approval for helicopter landings. Discussions about strategies and tactics in proposed wilderness.	DO will contact Zone FMO and Line Officer. No mechanized equipment within the Scotchman Proposed Wilderness Boundary besides chainsaws. Need approval for helicopter landings. Discussions about strategies and tactics in proposed wilderness.	DO will contact Zone FMO and Line Officer. No mechanized equipment within the Scotchman Proposed Wilderness Boundary besides chainsaws. Need approval for helicopter landings. Discussions about strategies and tactics in proposed wilderness.	

2022 CDC Runcards

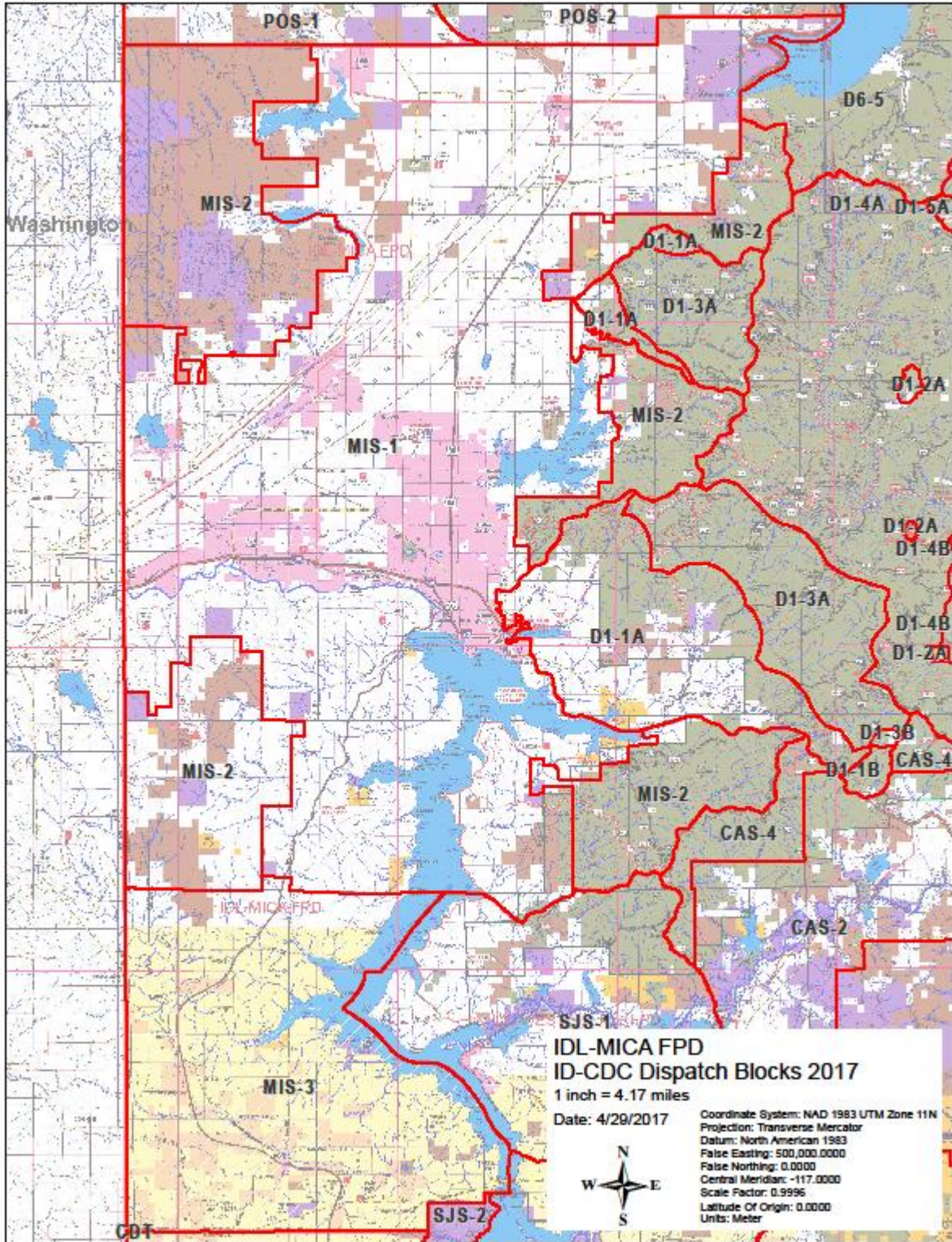
Preplanned Dispatch Runcard for:

AGENCY	UNIT	DISPATCH BLOCK #	DISPATCH BLOCK NAME	FDRA	COMMAND REPEATER
FS	D6	D6-5	LAKEVIEW	SOUTH MOUNTAINS	LITTLE BLACKTAIL FS

	LIGHT	MEDIUM	HEAVY	2 ND ALARM
FIRE RESPONSE	1 Engine -or- 1 I/A Module	1 Engine -or- 1 I/A Module	1 Engine -or- 1 I/A Module 1 Helicopter	1 Engine -or- 1 I/A Module ICT4
TAC FREQ	PRI: COM USE 2 SEC: COM USE 3 TER: COM USE 4	PRI: COM USE 2 SEC: COM USE 3 TER: COM USE 4	PRI: COM USE 2 SEC: COM USE 3 TER: COM USE 4	PRI: COM USE 2 SEC: COM USE 3 TER: COM USE 4
MOVE-UPS	None	Contact Duty Officer	Contact Duty Officer	Contact Duty Officer
CDC NOTIFICATIONS	None	Bonner County 911 Coordinate with DO if helicopter is needed.	Bonner County 911	Bonner County 911
CONSIDERATIONS	Limited access	Trail closures Boat or air may be quickest response	ICT4 Trail closures Boat or air may be quickest response	Boat or air may be quickest response
HAZARDS	WUI Powerline Corridor	WUI Powerline Corridor	WUI Powerline Corridor	WUI Powerline Corridor
REMARKS	DO will contact Zone FMO and Line Officer	DO will contact Zone FMO and Line Officer	DO will contact Zone FMO and Line Officer	DO will contact Zone FMO and Line Officer

2022 CDC Runcards

MICA FPD



2022 CDC Runcards

STATION 22 INFORMATION

Primary Repeater	Mica IDL
Street Address	3258 W Industrial Loop, Coeur d' Alene
Receptionist/Frontliner	Yes, M-F 0800-1700
Cell Service	Good
WIFI Service	No
Yale key access?	No
Alternate Standby Location(s)	Multiple – greater CDA area
Access Instructions	No
Nearest Fuel	Numerous
Recommended Food Nearby	Numerous
Nearest Fill-sites	On-site
Additional Information	



2022 CDC Runcards

Preplanned Dispatch Runcard for:

AGENCY	UNIT	DISPATCH BLOCK #	DISPATCH BLOCK NAME	FDRA	COMMAND REPEATER
IDL	MIS	MIS-1	DUAL JURISDICTION	SOUTH VALLEY	MICA IDL

	LIGHT	MEDIUM	HEAVY	2 ND ALARM
FIRE RESPONSE	1 District Engine	1 District Engine 2 nd Engine	1 District Engine 2 Additional Engines ICT4 Air attack (preferred) -or- 1 Helicopter with Crew FW/AFW if available	Duplicate Heavy Response Dozer + operator, transport, HEQB
TAC FREQ	PRI: IDL DIR4 SEC: IDL DIR2 TER: IDL DIR3	PRI: IDL DIR4 SEC: IDL DIR2 TER: IDL DIR3	PRI: IDL DIR4 SEC: IDL DIR2 TER: IDL DIR3	
MOVE-UPS		Maintain 1 Engine (either agency) in Coeur d'Alene, consult DO if engine is not available	Maintain 1 Engine (either agency) in Coeur d'Alene, consult DO if engine is not available	Maintain 1 Engine (either agency) in Coeur d'Alene, consult DO if engine is not available
CDC NOTIFICATIONS	District DO Central 911	District DO Central 911	District DO Central 911 Kootenai 911 Communications Section, via Central 911	District DO Central 911 Kootenai 911 Communications Section, via Central 911
CONSIDERATIONS	INVF	INVF	INVF	INVF
HAZARDS	WUI Most Departments do not have VHF radios, 700 MHz only	WUI Most Departments do not have VHF radios, 700 MHz only	WUI Most Departments do not have VHF radios, 700 MHz only	WUI Most Departments do not have VHF radios, 700 MHz only
REMARKS			DO will notify LO and Bureau DO	DO will notify LO and Bureau DO

2022 CDC Runcards

Preplanned Dispatch Runcard for:

AGENCY	UNIT	DISPATCH BLOCK #	DISPATCH BLOCK NAME	FDRA	COMMAND REPEATER
IDL	MIS	MIS-2	NON-DUAL-JURISDICTION	SOUTH VALLEY	MICA IDL

	LIGHT	MEDIUM	HEAVY	2 ND ALARM
FIRE RESPONSE	1 District Engine	1 District Engine 2 nd Engine	1 District Engine 2 Additional Engines ICT4 Air attack (preferred) -or- 1 Helicopter with Crew FW/AFW if available	Duplicate Heavy Response Dozer + operator, transport, HEQB
TAC FREQ	PRI: IDL DIR4 SEC: IDL DIR2 TER: IDL DIR3	PRI: IDL DIR4 SEC: IDL DIR2 TER: IDL DIR3	PRI: IDL DIR4 SEC: IDL DIR2 TER: IDL DIR3	
MOVE-UPS		Maintain 1 Engine (either agency) in Coeur d'Alene, consult DO if engine is not available	Maintain 1 Engine (either agency) in Coeur d'Alene, consult DO if engine is not available	Maintain 1 Engine (either agency) in Coeur d'Alene, consult DO if engine is not available
CDC NOTIFICATIONS	District DO Central 911 Landowner when identified	District DO Central 911 Landowner when identified	District DO Central 911 Landowner when identified	District DO Central 911 Landowner when identified Kootenai 911 Communications Section, via Central 911
CONSIDERATIONS	INVF	INVF	INVF	INVF
HAZARDS				
REMARKS			DO will notify LO and Bureau DO	DO will notify LO and Bureau DO

2022 CDC Runcards

Preplanned Dispatch Runcard for:

AGENCY	UNIT	DISPATCH BLOCK #	DISPATCH BLOCK NAME	FDRA	COMMAND REPEATER
IDL	MIS	MIS-3	MIS CDA TRIBE I/A ZONE	SOUTH VALLEY	MICA IDL

	LIGHT	MEDIUM	HEAVY	2 ND ALARM
FIRE RESPONSE	1 Engine IDL Representative (Engine or Personnel)	1 District Engine 2 nd Engine	2 District Engines 2 Additional Engines ICT4 Air attack (preferred) -or- 1 Helicopter with Crew FW/AFW if available	Duplicate Heavy Response Dozer + operator, transport, HEQB
TAC FREQ	PRI: IDL DIR4 SEC: IDL DIR2 TER: IDL DIR3	PRI: IDL DIR4 SEC: IDL DIR2 TER: IDL DIR3	PRI: IDL DIR4 SEC: IDL DIR2 TER: IDL DIR3	
MOVE-UPS		Maintain 1 Engine (either agency) in Coeur d'Alene, consult DO if engine is not available	Maintain 1 Engine (either agency) in Coeur d'Alene, consult DO if engine is not available	Maintain 1 Engine (either agency) in Coeur d'Alene, consult DO if engine is not available
CDC NOTIFICATIONS	District DO Worley Fire District via Kootenai 911 CDT DO	District DO Worley Fire District via Kootenai 911 CDT DO	District DO Worley Fire District via Kootenai 911 CDT DO Kootenai 911 Communications Section, via Kootenai 911	District DO Worley Fire District via Kootenai 911 CDT DO Kootenai 911 Communications Section, via Kootenai 911
CONSIDERATIONS	INVF	INVF	INVF	INVF
HAZARDS	Interoperability Concerns	Interoperability Concerns	Interoperability Concerns	Interoperability Concerns
REMARKS			DO will notify LO and Bureau DO	DO will notify LO and Bureau DO

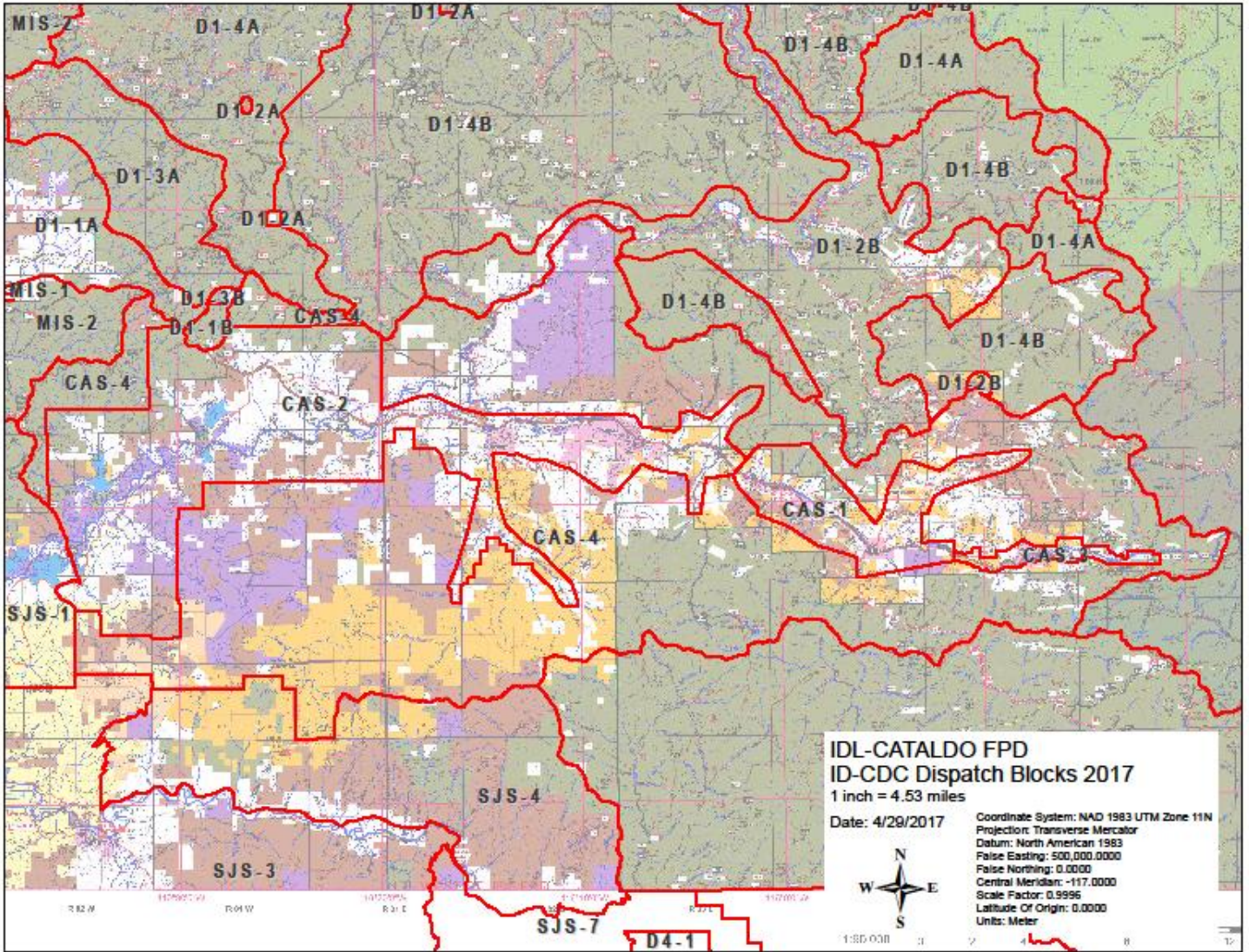
2022 CDC Runcards

Preplanned Dispatch Runcard for:

AGENCY	UNIT	DISPATCH BLOCK #	DISPATCH BLOCK NAME	FDRA	COMMAND REPEATER
IDL	MIS	MIS-4	CAR OR STRUCTURE FIRE THREATENING WILDLAND	SOUTH VALLEY	MICA IDL

	LIGHT	MEDIUM	HEAVY	2 ND ALARM
FIRE RESPONSE	1 District Engine	1 District Engine	1 District Engine	1 District Engine
TAC FREQ	PRI: IDL DIR4 SEC: IDL DIR2 TER: IDL DIR3	PRI: IDL DIR4 SEC: IDL DIR2 TER: IDL DIR3	PRI: IDL DIR4 SEC: IDL DIR2 TER: IDL DIR3	
MOVE-UPS		Maintain 1 Engine (either agency) in Coeur d'Alene, consult DO if engine is not available	Maintain 1 Engine (either agency) in Coeur d'Alene, consult DO if engine is not available	Maintain 1 Engine (either agency) in Coeur d'Alene, consult DO if engine is not available
CDC NOTIFICATIONS	District DO Central 911	District DO Central 911	District DO Central 911	District DO Central 911
CONSIDERATIONS	INVF	INVF	INVF	INVF
HAZARDS				
REMARKS			DO will notify Line Officer and Bureau DO	DO will notify Line Officer and Bureau DO

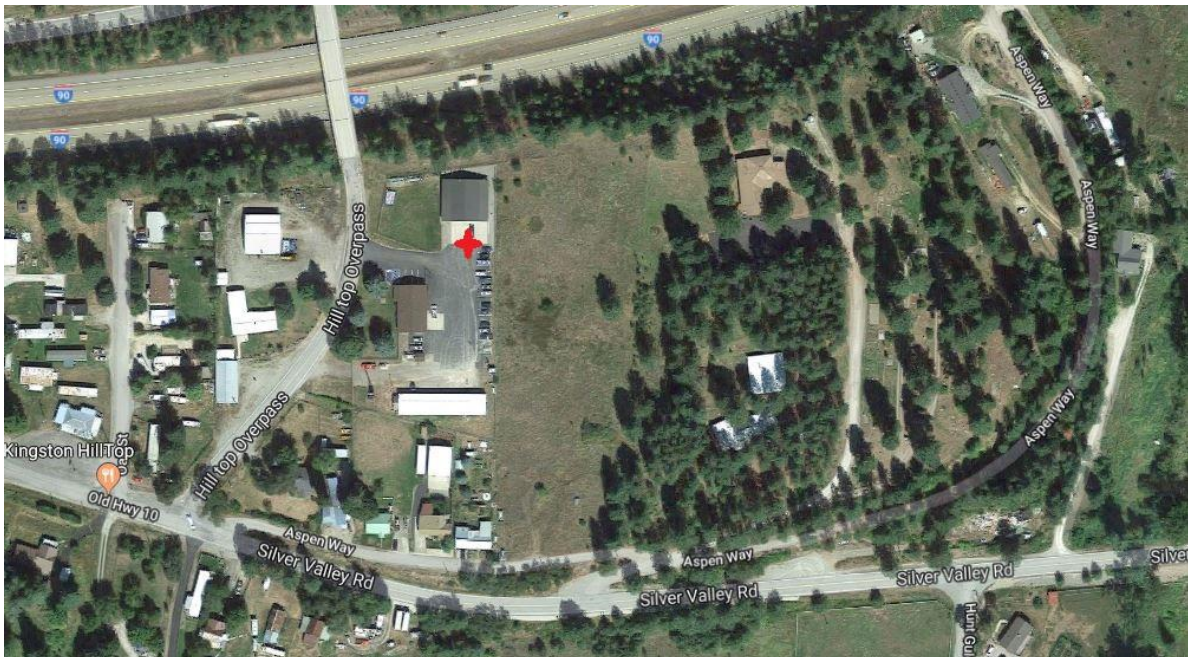
2022 CDC Runcards
CATALDO FPD



2022 CDC Runcards

STATION 31 INFORMATION

Primary Repeater	Wardner IDL
Street Address	80 Hilltop Overpass Road, Kingston
Receptionist/Frontliner	Yes, M-F 0830-1700
Cell Service	Yes, Booster in Shop
WIFI Service	No
Yale key access?	No
Alternate Standby Location(s)	District 2 stations at Doyle & Medimont
Access Instructions	Contact DO
Nearest Fuel	Two stations in Kingston
Recommended Food Nearby	Signed up restaurants. Cataldo Mission, Pine Creek Tavern, Yoke's in Kellogg
Nearest Fill-sites	Stand pipes in yard X2, Cataldo Mission boat ramp for drafting.
Additional Information	



2022 CDC Runcards

Preplanned Dispatch Runcard for:

AGENCY	UNIT	DISPATCH BLOCK #	DISPATCH BLOCK NAME	FDRA	COMMAND REPEATER
IDL	CAS	CAS-1	SCFD#1	SOUTH MOUNTAINS	WARD IDL

	LIGHT	MEDIUM	HEAVY	2 ND ALARM
FIRE RESPONSE	1 District Engine	1 District Engine 1 I/A Module -or- 2'nd Engine	2 Engines ICT4 1 Water Tender 1 Dozer	
TAC FREQ	PRI: IDL DIR2 SEC: IDL DIR4	PRI: IDL DIR2 SEC: IDL DIR4	PRI: IDL DIR2 SEC: IDL DIR4	
MOVE-UPS	NONE	NONE	MOVE WSJ ENGINE TO VALLEYMART OR D1 ENGINE TO SVO OR MIS ENGINE TO ROSE LAKE INTERCHANGE – <u>WHICHEVER IS CLOSEST AND AVAILABLE</u>	
CDC NOTIFICATIONS	SCFD#1 via SCSO <u>Only notify if within FPD's or Jurisdiction</u>	SCFD#1 via SCSO <u>Only notify if within FPD's or Jurisdiction</u>	SCFD#1 SHOSHONE COUNTY SHERIFFS OFFICE <u>Only notify if within FPD's or Jurisdiction</u>	
CONSIDERATIONS	NONE	CONSIDER WATER TENDER, DOZER CONSIDER MOVING UP WSJ ENGINE TO VALLEY MART OR D1 ENGINE TO SVO OR MIS ENGINE TO ROSE LAKE INTERCHANGE <u>WHICHEVER IS CLOSEST AND AVAILABLE</u>	CONSIDER DOZER, ADDITIONAL WATER TENDER, FIRE BOSS, AIR ATTACK, HELICOPTER CONSIDER SETTING UP MOBILE SEAT BASE AT SHOSHONE COUNTY AIRPORT	
HAZARDS				
REMARKS				

2022 CDC Runcards

Preplanned Dispatch Runcard for:

AGENCY	UNIT	DISPATCH BLOCK #	DISPATCH BLOCK NAME	FDRA	COMMAND REPEATER
IDL	CAS	CAS-2	SCFD#2	SOUTH VALLEY	WARD IDL

	LIGHT	MEDIUM	HEAVY	2 ND ALARM
FIRE RESPONSE	1 District Engine	1 District Engine 1 I/A Module -or- 2'nd Engine	2 Engines ICT4 1 Water Tender 1 Dozer	
TAC FREQ	PRI: IDL DIR2 SEC: IDL DIR4	PRI: IDL DIR2 SEC: IDL DIR4	PRI: IDL DIR2 SEC: IDL DIR4	
MOVE-UPS	NONE	NONE	MOVE WSJ ENGINE TO VALLEYMART OR D1 ENGINE TO SVO OR MIS ENGINE TO ROSE LAKE INTERCHANGE – <u>WHICHEVER IS CLOSEST AND AVAILABLE</u>	
CDC NOTIFICATIONS	SCFD#2 via SCSO <u>Only notify if within FPD's or Jurisdiction</u>	SCFD#2 via SCSO <u>Only notify if within FPD's or Jurisdiction</u>	SCFD#2 SHOSHONE COUNTY SHERIFFS OFFICE <u>Only notify if within FPD's or Jurisdiction</u>	
CONSIDERATIONS	NONE	CONSIDER WATER TENDER, DOZER CONSIDER MOVING UP WSJ ENGINE TO VALLEY MART OR D1 ENGINE TO SVO OR MIS ENGINE TO ROSE LAKE INTERCHANGE <u>WHICHEVER IS CLOSEST AND AVAILABLE</u>	CONSIDER DOZER, ADDITIONAL WATER TENDER, FIRE BOSS, AIR ATTACK, HELICOPTER CONSIDER SETTING UP MOBILE SEAT BASE AT SHOSHONE COUNTY AIRPORT	
HAZARDS				
REMARKS				

2022 CDC Runcards

Preplanned Dispatch Runcard for:

AGENCY	UNIT	DISPATCH BLOCK #	DISPATCH BLOCK NAME	FDRA	COMMAND REPEATER
IDL	CAS	CAS-3	SCFD#3	SOUTH MOUNTAINS	WARD IDL

	LIGHT	MEDIUM	HEAVY	2 ND ALARM
FIRE RESPONSE	1 District Engine	1 Engine 1 I/A Module -or- 2'nd Engine	2 Engines ICT4 1 Water Tender 1 Dozer	
TAC FREQ	PRI: IDL DIR2 SEC: IDL DIR4	PRI: IDL DIR2 SEC: IDL DIR4	PRI: IDL DIR2 SEC: IDL DIR4	
MOVE-UPS	NONE	NONE	MOVE WSJ ENGINE TO VALLEYMART OR D1 ENGINE TO SVO OR MIS ENGINE TO ROSE LAKE INTERCHANGE – <u>WHICHEVER IS CLOSEST AND AVAILABLE</u>	
CDC NOTIFICATIONS	SCFD#3 via SCSO Mullan VFD via SCSO <u>Only notify if within FPD's or Jurisdiction</u>	SCFD#3 via SCSO Mullan VFD via SCSO <u>Only notify if within FPD's or Jurisdiction</u>	SCFD#3 via SCSO Mullan VFD via SCSO SHOSHONE COUNTY SHERIFFS OFFICE <u>Only notify if within FPD's or Jurisdiction</u>	
CONSIDERATIONS	NONE	CONSIDER WATER TENDER, DOZER CONSIDER MOVING UP WSJ ENGINE TO VALLEY MART OR D1 ENGINE TO SVO OR MIS ENGINE TO ROSE LAKE INTERCHANGE <u>WHICHEVER IS CLOSEST AND AVAILABLE</u>	CONSIDER DOZER, ADDITIONAL WATER TENDER, FIRE BOSS, AIR ATTACK, HELICOPTER CONSIDER SETTING UP MOBILE SEAT BASE AT SHOSHONE COUNTY AIRPORT	
HAZARDS				
REMARKS				

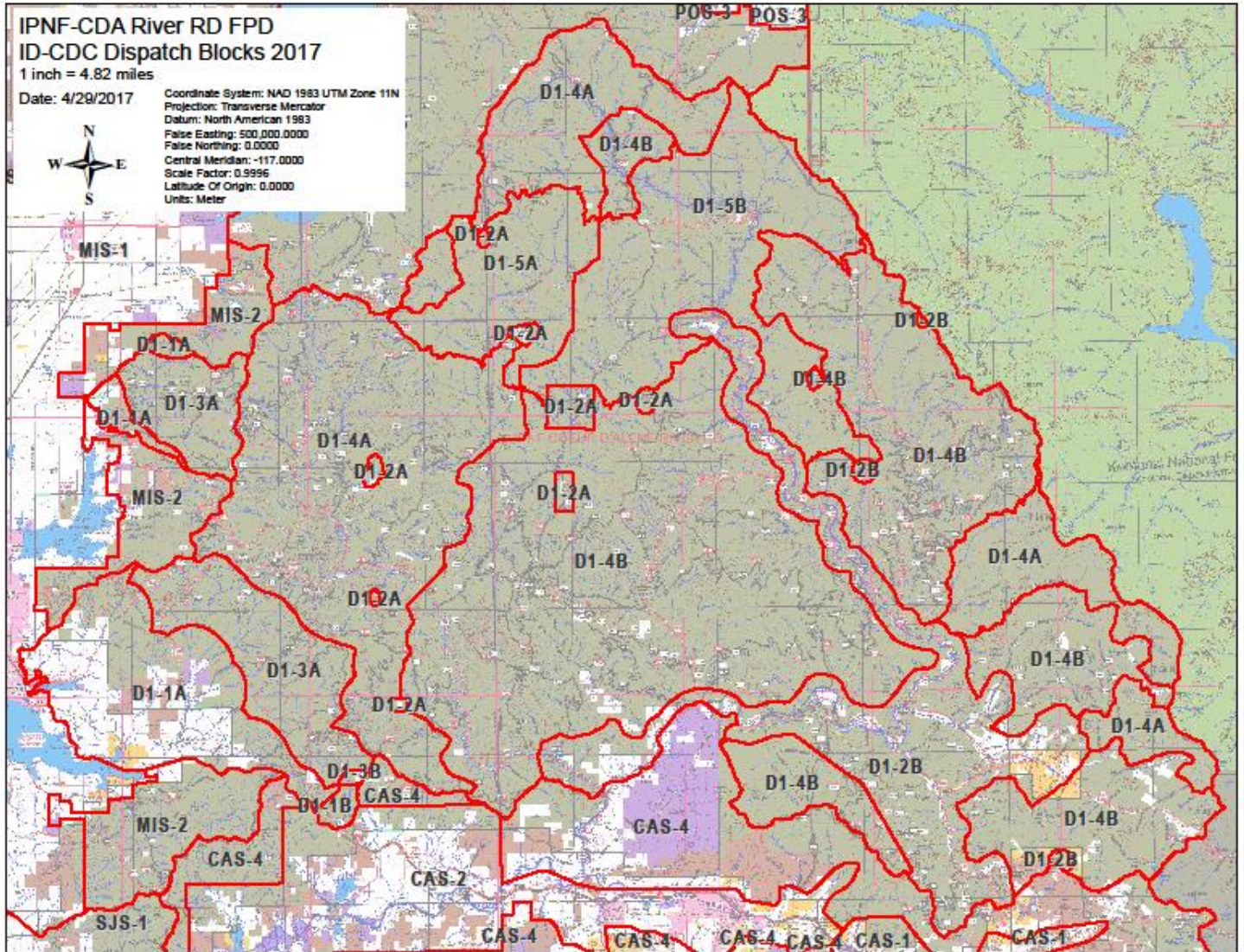
2022 CDC Runcards

Preplanned Dispatch Runcard for:

AGENCY	UNIT	DISPATCH BLOCK #	DISPATCH BLOCK NAME	FDRA	COMMAND REPEATER
IDL	CAS	CAS-4	CAS ZONE 4	SOUTH MOUNTAINS	WARD IDL

	LIGHT	MEDIUM	HEAVY	2 ND ALARM
FIRE RESPONSE	1 District Engine	1 Engine 1 I/A Module -or- 2'nd Engine	2 Engines ICT4 1 Water Tender 1 Dozer	
TAC FREQ	PRI: IDL DIR2 SEC: IDL DIR4	PRI: IDL DIR2 SEC: IDL DIR4	PRI: IDL DIR2 SEC: IDL DIR4	
MOVE-UPS	NONE	NONE	MOVE WSJ ENGINE TO VALLEYMART OR D1 ENGINE TO SVO OR MIS ENGINE TO ROSE LAKE INTERCHANGE – <u>WHICHEVER IS CLOSEST AND AVAILABLE</u>	
CDC NOTIFICATIONS	PMVFD via SCSO <u>Only notify if within FPD's or Jurisdiction</u>	PMVFD via SCSO <u>Only notify if within FPD's or Jurisdiction</u>	PMVFD VIA SCSO SCSO or KCSO <u>Only notify if within FPD's or Jurisdiction</u>	
CONSIDERATIONS	NONE	CONSIDER WATER TENDER, DOZER CONSIDER MOVING UP WSJ ENGINE TO VALLEY MART OR D1 ENGINE TO SVO OR MIS ENGINE TO ROSE LAKE INTERCHANGE <u>WHICHEVER IS CLOSEST AND AVAILABLE</u>	CONSIDER DOZER, ADDITIONAL WATER TENDER, FIRE BOSS, AIR ATTACK, HELICOPTER CONSIDER SETTING UP MOBILE SEAT BASE AT SHOSHONE COUNTY AIRPORT	
HAZARDS				
REMARKS				

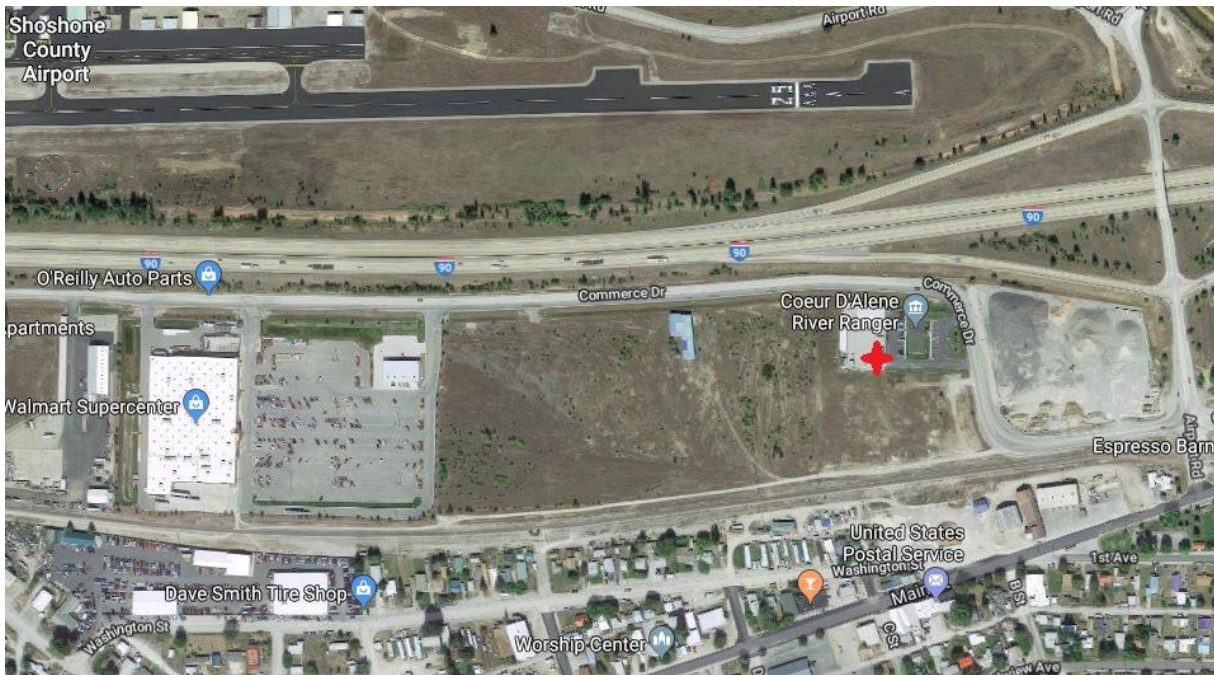
COEUR D' ALENE RIVER RANGER DISTRICT



2022 CDC Runcards

STATION 1 INFORMATION

Primary Repeater	Wardner FS
Street Address	173 Commerce Drive, Smelterville
Receptionist/Frontliner	Yes, M-F 0730-1600
Cell Service	Good
WIFI Service	No
Yale key access?	Compound only – buildings are keypad
Alternate Standby Location(s)	Smelterville Walmart
Access Instructions	Call DO
Nearest Fuel	Multiple in Kellogg and Pinehurst
Recommended Food Nearby	Smelterville Walmart, multiple others
Nearest Fill-sites	Filling site located on the compound (along the south fence line)
Additional Information	



2022 CDC Runcards

STATION 3 INFORMATION

Primary Repeater	Mica FS
Street Address	2502 E Sherman Ave, Coeur d' Alene
Receptionist/Frontliner	Yes, M-F 0730-1600
Cell Service	Good
WIFI Service	No
Yale key access?	No
Alternate Standby Location(s)	Numerous in CDA area
Access Instructions	Call DO
Nearest Fuel	Exxon, 0.3 miles down Sherman
Recommended Food Nearby	Sharis
Nearest Fill-sites	CDA FD Station 3 on 15 th Street
Additional Information	Fire facility is separate from main building



2022 CDC Runcards

Preplanned Dispatch Runcard for:

AGENCY	UNIT	DISPATCH BLOCK #	DISPATCH BLOCK NAME	FDRA	COMMAND REPEATER
FS	D1	D1-1	KOOTENAI COUNTY WUI	SOUTH VALLEY	MICA FS

	LIGHT	MEDIUM	HEAVY	2 ND ALARM
FIRE RESPONSE	1 District Engine -or- 1 District I/A Module	1 District Engine 2 nd Engine 1 I/A Module -or- 3 rd Engine	ICT4 BC or ICT3 if available 2 Engines 1 I/A Module -or- 3 rd Engine	2 Engines -or- T2IA Crew 2 Water Tenders 2 TFLD
TAC FREQ	PRI: COMUSE1 SEC: COMUSE2 TER: IDLDIR3	PRI: COMUSE1 SEC: COMUSE2 TER: IDLDIR3	PRI: COMUSE1 SEC: COMUSE2 TER: IDLDIR3	PRI: COMUSE1 SEC: COMUSE2 TER: IDLDIR3
MOVE-UPS		Maintain 1 Engine in Coeur d' Alene	Maintain 1 Engine in Coeur d' Alene DO to Fernan	Maintain 1 Engine in Coeur d' Alene 1 I/A Module to Fernan
CDC NOTIFICATIONS		Federal DO Northern Lakes F.D. via Kootenai 911 MIS DO	Federal DO Northern Lakes F.D. via Kootenai 911 MIS DO	Federal DO Northern Lakes F.D. via Kootenai 911 MIS DO
CONSIDERATIONS		Heavy Equipment w/HEQB, Structural Engines, Helicopter/Tanker Support, Air Attack, Area Closure	Heavy Equipment w/HEQB, Structural Engines, Helicopter/Tanker Support, Air Attack, Area Closure	Available aerial resources, Type 1 resources, DO and CDC discuss logistics
HAZARDS		Access/load limits on bridges, powerlines, dip site, WUI Operations	Access/load limits on bridges, powerlines, dip site, WUI Operations	Access/load limits on bridges, powerlines, dip site, WUI Operations
REMARKS		DO will contact District FMO and Line Officer.	DO will contact District FMO and Line Officer.	DO will contact District FMO and Line Officer.

2022 CDC Runcards

Preplanned Dispatch Runcard for:

AGENCY	UNIT	DISPATCH BLOCK #	DISPATCH BLOCK NAME	FDRA	COMMAND REPEATER
FS	D1	D1-2	CDA RIVER CORRIDOR WUI	SOUTH MOUNTAINS	LITTLE GUARD

	LIGHT	MEDIUM	HEAVY	2 ND ALARM
FIRE RESPONSE	1 District Engine -or- 1 District I/A Module	1 District Engine -or- 1 District I/A Module	1 Engine 1 I/A Module -or- 2'nd Engine ICT4 BC or ICT3 if available	2 Engines -or- 1 T2IA Crew 1 Water Tender 1 TFLD
TAC FREQ	PRI: COMUSE1 SEC: COMUSE2 TER: IDLDIR3	PRI: COMUSE1 SEC: COMUSE2 TER: IDLDIR3	PRI: COMUSE1 SEC: COMUSE2 TER: IDLDIR3	PRI: COMUSE1 SEC: COMUSE2 TER: IDLDIR3
MOVE-UPS			Maintain 1 Engine in Silver Valley DO or ICT3 to SVO	Maintain 1 Engine in Silver Valley 1 I/A Mod to SVO
CDC NOTIFICATIONS		Federal DO Shoshone County 911 CAS DO	Federal DO Shoshone County 911 CAS DO	
CONSIDERATIONS		ICT4 Heavy Equipment w/HEQB Structural Engines Helicopter/Tanker Support Air Attack Closure Orders INVF	Heavy Equipment w/HEQB Structural Engines Helicopter/Tanker Support Air Attack Closure Orders INVF	Available aerial resources Type 1 resources DO and CDC discuss logistics
HAZARDS		Access/load limits on bridges, powerlines, dip site, high rec area, WUI Operations	Access/load limits on bridges, powerlines, dip site, high rec area, WUI Operations	Access/load limits on bridges, powerlines, dip site, high rec area, WUI Operations
REMARKS		DO will contact District FMO and Line Officer.	DO will contact District FMO and Line Officer.	DO will contact District FMO and Line Officer.

2022 CDC Runcards

Preplanned Dispatch Runcard for:

AGENCY	UNIT	DISPATCH BLOCK #	DISPATCH BLOCK NAME	FDRA	COMMAND REPEATER
FS	D1	D1-3	CDA RIVER RD SOUTH VALLEY	SOUTH VALLEY	MICA FS

	LIGHT	MEDIUM	HEAVY	2 ND ALARM
FIRE RESPONSE	1 District Engine -or- 1 District I/A Module	1 District Engine -or- 1 District I/A Module	2 Engines 1 I/A Module -or- 3 rd Engine ICT4	2 Engines 1 T1 or T2IA Crew 1 Water Tender 1 TFLD
TAC FREQ	PRI: COMUSE1 SEC: COMUSE2 TER: IDLDIR3	PRI: COMUSE1 SEC: COMUSE2 TER: IDLDIR3	PRI: COMUSE1 SEC: COMUSE2 TER: IDLDIR3	PRI: COMUSE1 SEC: COMUSE2 TER: IDLDIR3
MOVE-UPS			Maintain 1 Engine in CDA ICT3 to Fernan	ICT3 to Fernan BC to Fernan Maintain 1 Engine or I/A Module in Fernan
CDC NOTIFICATIONS	Adjacent jurisdictional DO's on border fires	Federal DO MIS DO adjacent jurisdictional DO's on border fires,	Federal DO MIS DO Northern Lakes FD via Kootenai County 911 adjacent jurisdictional DO's on border fires	
CONSIDERATIONS	INVF	ICT4 Heavy Equipment w/HEQB Structural Engines Helicopter/Tanker Support Air Attack Closure Orders	ICT3 Heavy Equipment w/HEQB Structural Engines Helicopter/Tanker Support Air Attack Closure Orders	Available aerial resources Type 1 resources DO and CDC discuss logistics
HAZARDS	Access/load limits on bridges, powerlines, dip site, high rec area	Access/load limits on bridges, powerlines, dip site, high rec area	Access/load limits on bridges, powerlines, dip site, high rec area	Access/load limits on bridges, powerlines, dip site, high rec area
REMARKS		DO will contact District FMO and Line Officer	DO will contact District FMO and Line Officer	DO will contact District FMO and Line Officer

2022 CDC Runcards

Preplanned Dispatch Runcard for:

AGENCY	UNIT	DISPATCH BLOCK #	DISPATCH BLOCK NAME	FDRA	COMMAND REPEATER
FS	D1	D1-4	CDA RIVER RD SOUTH MOUNTAINS	SOUTH MOUNTAINS	LITTLE GUARD

	LIGHT	MEDIUM	HEAVY	2 ND ALARM
FIRE RESPONSE	1 District Engine -or- 1 District I/A Module	1 District Engine -or- 1 District I/A Module	2 Engines 1 I/A Module -or- 3 rd Engine ICT4	2 Engines 1 T1 or T2IA Crew 1 Water Tender 1 TFLD
TAC FREQ	PRI: COMUSE1 SEC: COMUSE2 TER: IDLDIR3	PRI: COMUSE1 SEC: COMUSE2 TER: IDLDIR3	PRI: COMUSE1 SEC: COMUSE2 TER: IDLDIR3	PRI: COMUSE1 SEC: COMUSE2 TER: IDLDIR3
MOVE-UPS		Maintain 1 Engine in Silver Valley	1 Engine to Fernan or SVO (Contact DO) ICT3 to Fernan or SVO (Contact DO)	Maintain 1 Engine or I/A Module at SVO or Fernan ICT3 to SVO or Fernan BC to SVO or Fernan
CDC NOTIFICATIONS	Adjacent jurisdictional DO's on border fires	Federal DO MIS or CAT DO Shoshone or Kootenai County 911, Adjacent jurisdictional DO's on border fires	Federal Duty Officer, MIS or CAT Duty Officer, Shoshone or Kootenai County 911, Adjacent jurisdictional DO's on border fires	
CONSIDERATIONS		ICT4 Heavy Equipment w/HEQB Structural Engines Helicopter/Tanker Support Air Attack Closure Orders	ICT3 Heavy Equipment w/HEQB Structural Engines Helicopter/Tanker Support Air Attack Closure Orders	Available aerial resources Type 1 resources DO and CDC discuss logistics
HAZARDS	Access/load limits on bridges, powerlines, dip site, high rec area	Access/load limits on bridges, powerlines, dip site, high rec area	Access/load limits on bridges, powerlines, dip site, high rec area	Access/load limits on bridges, powerlines, dip site, high rec area
REMARKS		DO will contact District FMO, Line Officer, and Outfitter & Guide permittees	DO will contact District FMO, Line Officer, and Outfitter & Guide permittees	DO will contact District FMO and Line Officer

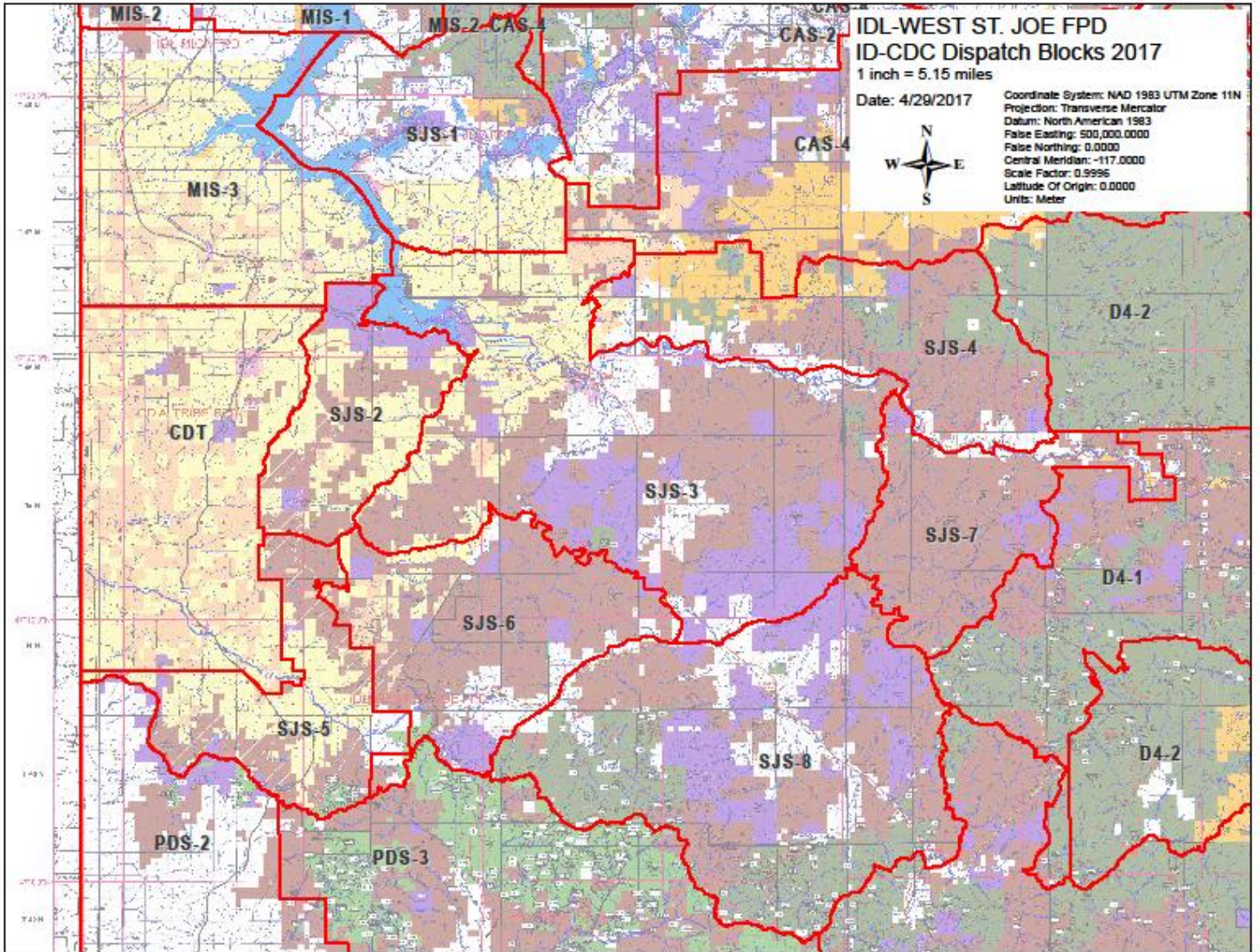
2022 CDC Runcards

Preplanned Dispatch Runcard for:

AGENCY	UNIT	DISPATCH BLOCK #	DISPATCH BLOCK NAME	FDRA	COMMAND REPEATER
FS	D1	D1-5	CDA RIVER BACKCOUNTRY	SOUTH MOUNTAINS	LITTLE GUARD

	LIGHT	MEDIUM	HEAVY	2 ND ALARM
FIRE RESPONSE	*Contact Duty Officer	1 District Engine -or- 1 District I/A Module *Contact Duty Officer Before Tone Out	1 Agency Engine ICT4 1 Helicopter *Contact Duty Officer Before Tone Out	1 Engine 1 T1 or T2IA Crew 1 Helicopter 1 TFLD
TAC FREQ	PRI: COMUSE1 SEC: COMUSE2 TER: IDLDIR3	PRI: COMUSE1 SEC: COMUSE2 TER: IDLDIR3	PRI: COMUSE1 SEC: COMUSE2 TER: IDLDIR3	PRI: COMUSE1 SEC: COMUSE2 TER: IDLDIR3
MOVE-UPS			Maintain 1 Engine in Silver Valley ICT3 to SVO	ICT3 or BC to SVO Maintain 1 I/A Engine or Module at SVO
CDC NOTIFICATIONS	Federal DO CAS DO Shoshone or County 911 Adjacent jurisdictional DO's on boarder fires	Federal DO CAS DO Shoshone or County 911 Adjacent jurisdictional DO's on boarder fires	Federal DO CAS DO Shoshone or County 911 Adjacent jurisdictional DO's on boarder fires	
CONSIDERATIONS	*Manage fire for Resource Benefit or Multiple Objectives Area Closure	ICT4, Helitack, Area Closure *Manage fire for Resource Benefit or Multiple Objectives	ICT3, Heavy Equipment w/HEQB, Helicopter/Tanker Support, Air Attack, Area Closure, *Manage fire for Resource Benefit or Multiple Objectives	Available aerial resources Type 1 resources DO and CDC discuss logistics
HAZARDS	Access/load limits on bridges, powerlines, dip site, remote location	Access/load limits on bridges, powerlines, dip site, remote location	Access/load limits on bridges, powerlines, dip site, remote location	Access/load limits on bridges, powerlines, dip site, remote location
REMARKS	DO will contact District FMO and Line Officer. Border fires call adjacent Dist. WFDSS Decision Outfitter & Guide permittees	DO will contact District FMO and Line Officer. Border fires call adjacent Dist. WFDSS Decision Outfitter & Guide permittees	DO will contact District FMO and Line Officer. Border fires call adjacent Dist. WFDSS Decision Outfitter & Guide permittees	DO will contact District FMO and Line Officer. Border fires call adjacent Dist.

WEST ST. JOE FPD



2022 CDC Runcards

STATION 32 INFORMATION

Primary Repeater	St. Joe Baldy IDL
Street Address	1806 Main Ave, St. Maries
Receptionist/Frontliner	Yes, M-F 0800-1700
Cell Service	Very Good
WIFI Service	No
Yale key access?	No
Alternate Standby Location(s)	Call DO to have the facility unlocked
Access Instructions	
Nearest Fuel	Cenex on 10 th Street has diesel & unleaded
Recommended Food Nearby	Pizza Factory located on Main Ave, Grub Box located at corner of Center and N 8 th Street, Burger Express located at College/S 3 rd Street
Nearest Fill-sites	Stand Pipe in compound behind engine bays, Fire Hydrant located at St. Maries Fire Station (Corner of W Jefferson and S 3 rd Street). Drafting site located at Aqua Park Boat Launch (Follow 10 th Street South to the intersection of Aqua Avenue.
Additional Information	



2022 CDC Runcards

Preplanned Dispatch Runcard for:

AGENCY	UNIT	DISPATCH BLOCK #	DISPATCH BLOCK NAME	FDRA	COMMAND REPEATER
IDL	SJS	SJS-1	HARRISON AREA	SOUTH VALLEY	MICA IDL

	LIGHT	MEDIUM	HEAVY	2 ND ALARM
FIRE RESPONSE	1 District Engine	1 Engine 1 I/A Module -or- 2'nd Engine 1 District I/A Module or Engine if previous resources do not include a SJS resource	2 Engines 1 Water Tender 1 District Dozer ICT4 1 District I/A Module or Engine if previous resources do not include a SJS resource	1 Engine -or- I/A Module 1 HEQB or HEQB(t) 1 TFLD or TFLD(t) 1 ICT3 (if one isn't already on- scene) Utilize local available Agency ICT3's first
TAC FREQ	PRI: IDL DIR2 SEC: IDL DIR4	PRI: IDL DIR2 SEC: IDL DIR4	PRI: IDL DIR2 SEC: IDL DIR4	
MOVE-UPS	NONE	NONE	D4 ENGINE TO SM OR CALDER OR PDS ENGINE TO CLARKIA OR CDT ENGINE TO SM – WHICHEVER IS CLOSEST AND AVAILABLE	
CDC NOTIFICATIONS	BENEWAH COUNTY SHERIFF KOOTENAI COUNTY SHERIFF	BENEWAH COUNTY SHERIFF KOOTENAI COUNTY SHERIFF	BENEWAH COUNTY SHERIFF KOOTENAI COUNTY SHERIFF	
CONSIDERATIONS	NONE	CONSIDER WATER TENDER, DOZER CONSIDER MOVING UP D4 ENGINE TO SM OR CALDER OR PDS ENGINE TO CLARKIA OR CDT ENGINE TO SM- WHICHEVER IS CLOSEST AND AVAILABLE	CONSIDER DOZER, ADDITIONAL WATER TENDER, FIRE BOSS, AIR ATTACK, HELICOPTER CONSIDER SETTING UP MOBILE SEAT BASE @ SM AIRPORT	
HAZARDS				
REMARKS				

2022 CDC Runcards

Preplanned Dispatch Runcard for:

AGENCY	UNIT	DISPATCH BLOCK #	DISPATCH BLOCK NAME	FDRA	COMMAND REPEATER
IDL	SJS	SJS-2	BENEWAH AREA	SOUTH VALLEY	IDL BALDY

	LIGHT	MEDIUM	HEAVY	2 ND ALARM
FIRE RESPONSE	1 District Engine	1 Engine 1 I/A Module -or- 2 nd Engine 1 District I/A Module or Engine if previous resources do not include a SJS resource	2 Engines 1 Water Tender 1 District or CDT Dozer ICT4 1 District I/A Module or Engine if previous resources do not include a SJS resource	1 Engine -or- I/A Module 1 HEQB or HEQB(t) 1 TFLD or TFLD(t) 1 ICT3 (if one isn't already on- scene) Utilize local available Agency ICT3's first
TAC FREQ	PRI: IDL DIR2 SEC: IDL DIR4	PRI: IDL DIR2 SEC: IDL DIR4	PRI: IDL DIR2 SEC: IDL DIR4	
MOVE-UPS	NONE	NONE	MOVE CAS ENGINE TO VALLEYMART OR D4 ENGINE TO SM OR CALDER OR PDS ENGINE TO CLARKIA - WHICHEVER IS CLOSEST AND AVAILABLE	
CDC NOTIFICATIONS	BENEWAH COUNTY SHERIFF	BENEWAH COUNTY SHERIFF	BENEWAH COUNTY SHERIFF	
CONSIDERATIONS	NONE	CONSIDER WATER TENDER, DOZER CONSIDER MOVING UP D4 ENGINE TO SM OR CALDER OR PDS ENGINE TO CLARKIA OR CAS ENGINE TO VALLEYMART- WHICHEVER IS CLOSEST AND AVAILABLE	CONSIDER DOZER, ADDITIONAL WATER TENDER, FIRE BOSS, AIR ATTACK, HELICOPTER CONSIDER SETTING UP MOBILE SEAT BASE @ SM AIRPORT	
HAZARDS				
REMARKS				

2022 CDC Runcards

Preplanned Dispatch Runcard for:

AGENCY	UNIT	DISPATCH BLOCK #	DISPATCH BLOCK NAME	FDRA	COMMAND REPEATER
IDL	SJS	SJS-3	CENTRAL AREA	SOUTH VALLEY	IDL BALDY

	LIGHT	MEDIUM	HEAVY	2 ND ALARM
FIRE RESPONSE	1 District Engine	1 Engine 1 I/A Module -or- 2 nd Engine 1 District I/A Module or Engine if previous resources do not include a SJS resource	2 Engines 1 Water Tender 1 District Dozer ICT4 1 District I/A Module or Engine if previous resources do not include a SJS resource	1 Engine -or- I/A Module 1 HEQB or HEQB(t) 1 TFLD or TFLD(t) 1 ICT3 (if one isn't already on- scene) Utilize local available Agency ICT3's first
TAC FREQ	PRI: IDL DIR2 SEC: IDL DIR4	PRI: IDL DIR2 SEC: IDL DIR4	PRI: IDL DIR2 SEC: IDL DIR4	
MOVE-UPS	NONE	NONE	MOVE D4 ENGINE TO SM OR CDT ENGINE TO SM – <u>WHICHEVER IS CLOSEST AND AVAILABLE</u>	
CDC NOTIFICATIONS	BENEWAH COUNTY SHERIFF	BENEWAH COUNTY SHERIFF	BENEWAH COUNTY SHERIFF	
CONSIDERATIONS	NONE	CONSIDER WATER TENDER, DOZER CONSIDER MOVING D4 ENGINE TO SM OR CDT ENGINE TO SM <u>WHICHEVER IS CLOSEST AND AVAILABLE</u>	CONSIDER DOZER, ADDITIONAL WATER TENDER, FIRE BOSS, AIR ATTACK, HELICOPTER, RETARDENT CONSIDER SETTING UP MOBILE SEAT BASE @ SM AIRPORT	
HAZARDS				
REMARKS				

2022 CDC Runcards

Preplanned Dispatch Runcard for:

AGENCY	UNIT	DISPATCH BLOCK #	DISPATCH BLOCK NAME	FDRA	COMMAND REPEATER
IDL	SJS	SJS-4	NORTH DIVIDE AREA	SOUTH VALLEY	IDL BALDY

	LIGHT	MEDIUM	HEAVY	2 ND ALARM
FIRE RESPONSE	1 District Engine	1 Engine 1 I/A Module -or- 2'nd Engine 1 District I/A Module or Engine if previous resources do not include a SJS resource	2 Engines 1 Water Tender 1 District Dozer 1 IDL Helicopter ICT4 1 District I/A Module or Engine if previous resources do not include a SJS resource	1 Engine -or- I/A Module 1 HEQB or HEQB(t) 1 TFLD or TFLD(t) 1 ICT3 (if one isn't already on- scene) Utilize local available Agency ICT3's first
TAC FREQ	PRI: IDL DIR2 SEC: IDL DIR4	PRI: IDL DIR2 SEC: IDL DIR4	PRI: IDL DIR2 SEC: IDL DIR4	
MOVE-UPS	NONE	NONE	MOVE PDS ENGINE TO CLARKIA OR CAS ENGINE TO VALLEYMART OR CDT ENGINE TO SM <u>WHICHEVER IS CLOSEST AND AVAILABLE</u>	
CDC NOTIFICATIONS	BENEWAH COUNTY SHERIFF SHOSHONE COUNTY SHERIFF	BENEWAH COUNTY SHERIFF SHOSHONE COUNTY SHERIFF	BENEWAH COUNTY SHERIFF SHOSHONE COUNTY SHERIFF	
CONSIDERATIONS	NONE	CONSIDER WATER TENDER, DOZER, HELITACK CONSIDER MOVING PDS ENGINE TO CLARKIA OR CAS ENGINE TO VALLEYMART OR CDT ENGINE TO SM - <u>WHICHEVER IS CLOSEST AND AVAILABLE</u>	CONSIDER DOZER, ADDITIONAL WATER TENDER, FIRE BOSS, AIR ATTACK, HELICOPTER, RETARDENT CONSIDER SETTING UP MOBILE SEAT BASE @ SM AIRPORT	
HAZARDS				
REMARKS				

2022 CDC Runcards

Preplanned Dispatch Runcard for:

AGENCY	UNIT	DISPATCH BLOCK #	DISPATCH BLOCK NAME	FDRA	COMMAND REPEATER
IDL	SJS	SJS-5	SANDERS AREA	SOUTH VALLEY	CDT TEKO

	LIGHT	MEDIUM	HEAVY	2 ND ALARM
FIRE RESPONSE	1 District Engine	1 Engine 1 I/A Module -or- 2'nd Engine 1 District I/A Module or Engine if previous resources do not include a SJS resource	2 Engines 1 Water Tender 1 District or CDT Dozer ICT4 1 District I/A Module or Engine if previous resources do not include a SJS resource	1 Engine -or- I/A Module 1 HEQB or HEQB(t) 1 TFLD or TFLD(t) 1 ICT3 (if one isn't already on-scene) Utilize local available Agency ICT3's first
TAC FREQ	PRI: IDL DIR2 SEC: IDL DIR4	PRI: IDL DIR2 SEC: IDL DIR4	PRI: IDL DIR2 SEC: IDL DIR4	
MOVE-UPS	NONE	NONE	MOVE D4 ENGINE TO SM OR CALDER OR PDS ENGINE TO CLARKIA OR CAS ENGINE TO VALLEYMART- <u>WHICHEVER IS CLOSEST AND AVAILABLE</u>	
CDC NOTIFICATIONS	BENEWAH COUNTY SHERIFF EMIDA FIRE DIST.	BENEWAH COUNTY SHERIFF EMIDA FIRE DIST.	BENEWAH COUNTY SHERIFF EMIDA FIRE DIST.	
CONSIDERATIONS	NONE	CONSIDER WATER TENDER, DOZER CONSIDER MOVING D4 ENGINE TO SM OR CALDER OR PDS ENGINE TO CLARKIA OR CAS ENGINE TO VALLEYMART- <u>WHICHEVER IS CLOSEST AND AVAILABLE</u>	CONSIDER ADDITIONAL DOZER, ADDITIONAL WATER TENDER, FIRE BOSS, AIR ATTACK, HELICOPTER, RETARDENT CONSIDER SETTING UP MOBILE SEAT BASE @ SM AIRPORT	
HAZARDS				
REMARKS				

2022 CDC Runcards

Preplanned Dispatch Runcard for:

AGENCY	UNIT	DISPATCH BLOCK #	DISPATCH BLOCK NAME	FDRA	COMMAND REPEATER
IDL	SJS	SJS-6	JOHNS CREEK AREA	SOUTH VALLEY	IDL BALDY

	LIGHT	MEDIUM	HEAVY	2 ND ALARM
FIRE RESPONSE	1 District Engine	1 Engine 1 I/A Module -or- 2'nd Engine 1 District I/A Module or Engine if previous resources do not include a SJS resource	2 Engines 1 Water Tender 1 District or CDT Dozer ICT4 1 District I/A Module or Engine if previous resources do not include a SJS resource	1 Engine -or- I/A Module 1 HEQB or HEQB(t) 1 TFLD or TFLD(t) 1 ICT3 (if one isn't already on- scene) Utilize local available Agency ICT3's first
TAC FREQ	PRI: IDL DIR2 SEC: IDL DIR4	PRI: IDL DIR2 SEC: IDL DIR4	PRI: IDL DIR2 SEC: IDL DIR4	
MOVE-UPS	NONE	NONE	MOVE D4 ENGINE TO SM OR CALDER OR PDS ENGINE TO CLARKIA OR CAS ENGINE TO VALLEYMART- <u>WHICHEVER IS CLOSEST AND AVAILABLE</u>	
CDC NOTIFICATIONS	BENEWAH COUNTY SHERIFF EMIDA FIRE DIST.	BENEWAH COUNTY SHERIFF EMIDA FIRE DIST.	BENEWAH COUNTY SHERIFF EMIDA FIRE DIST.	
CONSIDERATIONS	NONE	CONSIDER WATER TENDER, DOZER CONSIDER MOVING D4 ENGINE TO SM OR CALDER OR PDS ENGINE TO CLARKIA OR CAS ENGINE TO VALLEYMART- <u>WHICHEVER IS CLOSEST AND AVAILABLE</u>	CONSIDER ADDITIONAL DOZER, ADDITIONAL WATER TENDER, FIRE BOSS, AIR ATTACK, HELICOPTER, RETARDENT CONSIDER SETTING UP MOBILE SEAT BASE @ SM AIRPORT	
HAZARDS				
REMARKS				

2022 CDC Runcards

Preplanned Dispatch Runcard for:

AGENCY	UNIT	DISPATCH BLOCK #	DISPATCH BLOCK NAME	FDRA	COMMAND REPEATER
IDL	SJS	SJS-7	MICA CREEK AREA	SOUTH VALLEY	IDL BALDY

	LIGHT	MEDIUM	HEAVY	2 ND ALARM
FIRE RESPONSE	1 District Engine	1 Engine 1 I/A Module -or- 2'nd Engine 1 District I/A Module or Engine if previous resources do not include a SJS resource	2 Engines 1 Water Tender 1 District Dozer ICT4 1 District I/A Module or Engine if previous resources do not include a SJS resource	1 Engine -or- I/A Module 1 HEQB or HEQB(t) 1 TFLD or TFLD(t) 1 ICT3 (if one isn't already on-scene) Utilize local available Agency ICT3's first
TAC FREQ	PRI: IDL DIR2 SEC: IDL DIR4	PRI: IDL DIR2 SEC: IDL DIR4	PRI: IDL DIR2 SEC: IDL DIR4	
MOVE-UPS	NONE	NONE	MOVE CAS ENGINE TO VALLEYMART OR PDS ENGINE TO CLARKIA - <u>WHICHEVER IS CLOSEST AND AVAILABLE</u>	
CDC NOTIFICATIONS	SHOSHONE COUNTY SHERIFF BENEWAH COUNTY SHERIFFS OFFICE	SHOSHONE COUNTY SHERIFF BENEWAH COUNTY SHERIFFS OFFICE	SHOSHONE COUNTY SHERIFF BENEWAH COUNTY SHERIFFS OFFICE	
CONSIDERATIONS	NONE	CONSIDER WATER TENDER, DOZER CONSIDER MOVING CAS ENGINE TO VALLEYMART OR PDS ENGINE TO CLARKIA. <u>WHICHEVER IS CLOSEST AND AVAILABLE</u>	CONSIDER ADDITIONAL WATER TENDER, FIRE BOSS, AIR ATTACK, HELICOPTER, SEATS, HELITACK CONSIDER SETTING UP MOBILE SEAT BASE @ SM AIRPORT	
HAZARDS				
REMARKS				

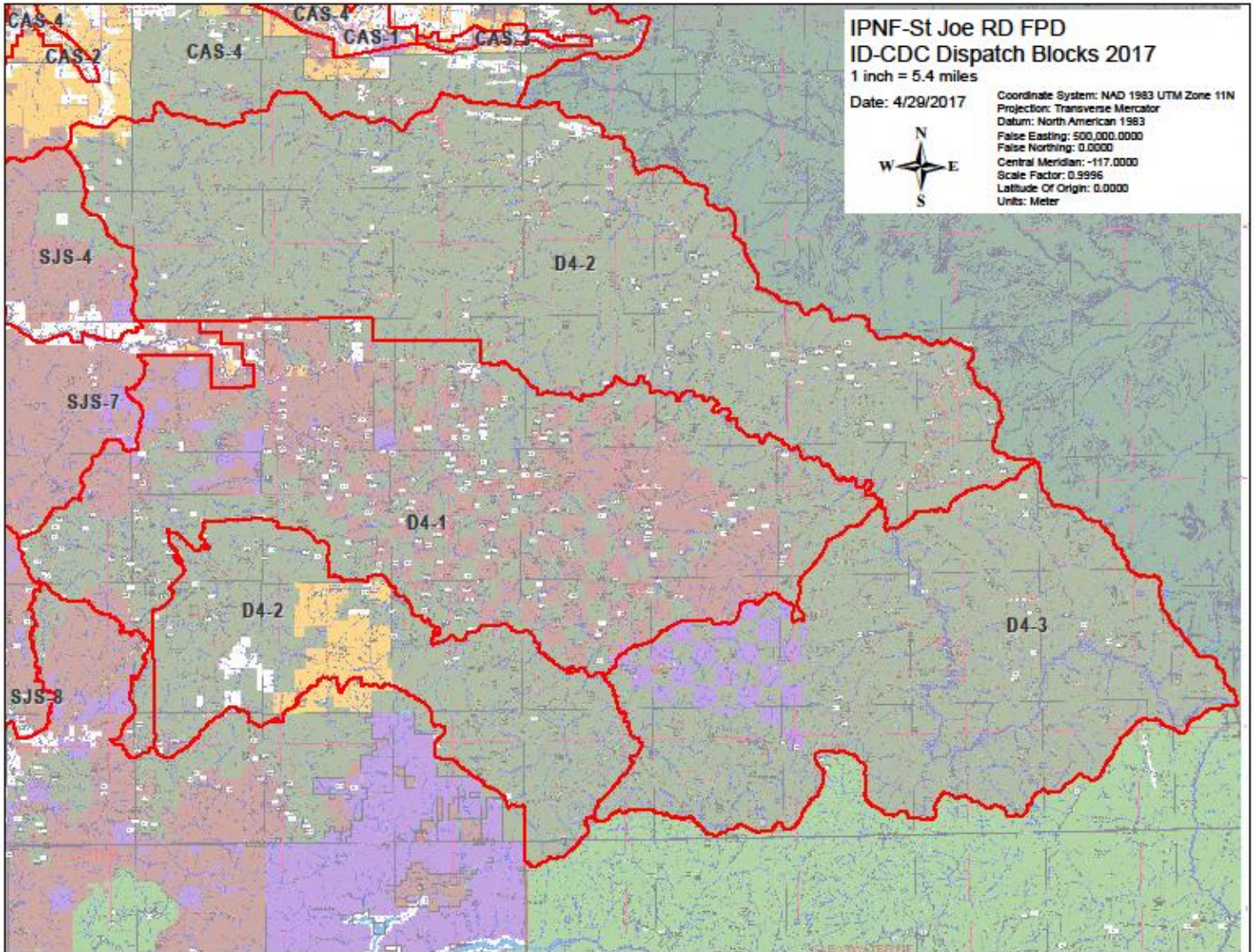
2022 CDC Runcards

Preplanned Dispatch Runcard for:

AGENCY	UNIT	DISPATCH BLOCK #	DISPATCH BLOCK NAME	FDRA	COMMAND REPEATER
IDL	SJS	SJS-8	TRI-CITIES AREA	SOUTH VALLEY	IDL ELK BUTTE

	LIGHT	MEDIUM	HEAVY	2 ND ALARM
FIRE RESPONSE	1 District Engine	1 Engine 1 I/A Module -or- 2'nd Engine 1 District I/A Module or Engine if previous resources do not include a SJS resource	2 Engines 1 Water Tender 1 District Dozer ICT4 1 District I/A Module or Engine if previous resources do not include a SJS resource	1 Engine -or- I/A Module 1 HEQB or HEQB(t) 1 TFLD or TFLD(t) 1 ICT3 (if one isn't already on-scene) Utilize local available Agency ICT3's first
TAC FREQ	PRI: IDL DIR2 SEC: IDL DIR4	PRI: IDL DIR2 SEC: IDL DIR4	PRI: IDL DIR2 SEC: IDL DIR4	
MOVE-UPS	NONE	NONE	MOVE CAS ENGINE TO VALLEYMART OR D4 ENGINE TO SM or CALDER OR CDT ENGINE TO SM <u>WHICHEVER IS CLOSEST AND AVAILABLE</u>	
CDC NOTIFICATIONS	BENEWAH COUNTY SHERIFF LATAH COUNTY SHERIFF	BENEWAH COUNTY SHERIFF LATAH COUNTY SHERIFF	BENEWAH COUNTY SHERIFF LATAH COUNTY SHERIFF	
CONSIDERATIONS	NONE	CONSIDER WATER TENDER, DOZER CONSIDER MOVING CAS ENGINE TO VALLEYMART OR DR ENGINE TO SM or CALDER OR CDT ENGINE TO SM <u>WHICHEVER IS CLOSEST AND AVAILABLE</u>	CONSIDER ADDITIONAL WATER TENDER, DOZER, FIRE BOSS, AIR ATTACK, HELICOPTER, SEATS, HELITACK CONSIDER SETTING UP MOBILE SEAT BASE @ SM AIRPORT	
HAZARDS				
REMARKS				

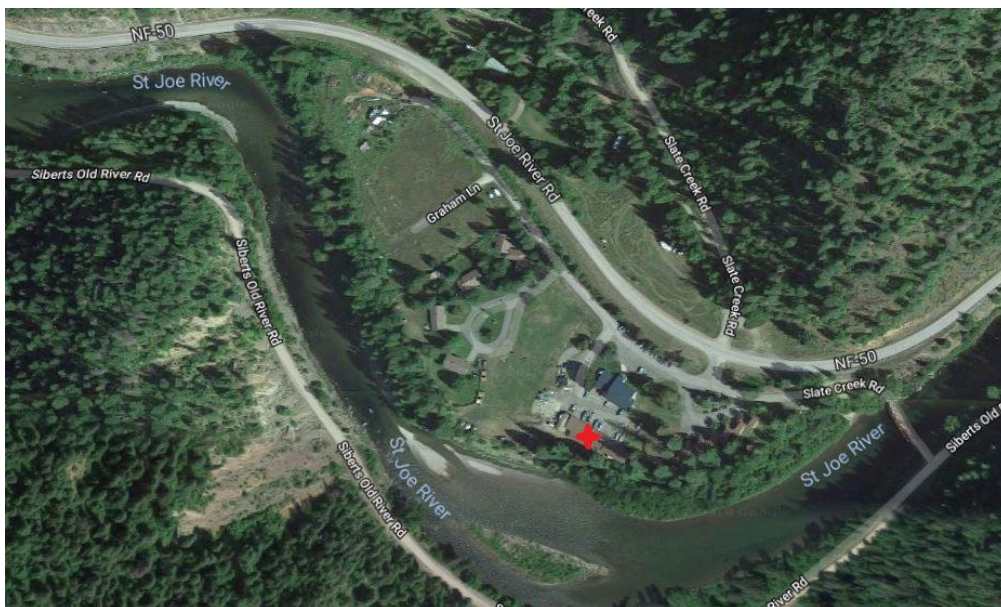
ST. JOE RANGER DISTRICT



2022 CDC Runcards

STATION 2 INFORMATION

Primary Repeater	Dunn Peak FS
Street Address	34 Hoyt Drive, Avery
Receptionist/Frontliner	Yes, M-F 0730-1600
Cell Service	No
WIFI Service	Yes, agency WIFI
Yale key access?	No, Contact DO for access code
Alternate Standby Location(s)	No
Access Instructions	Fire Office on main floor west side of building, access off back desk through glass slider.
Nearest Fuel	St. Joe Oil (Bulk Fuel Tanks just as you cross under bridge into town, look up to the left) and Avery Store and Motel both located in town of Avery 6 miles east of station.
Recommended Food Nearby	Avery Store and Motel (Avery) Calder Store and Restaraunt (18 Miles downriver) or Large variety 40 Miles downriver in St. Maries.
Nearest Fill-sites	At Station (Electric Pump ask for help on operation before using) or 6 miles downriver under first bridge crossing St. Joe (Draft site)
Additional Information	Beautiful remote facility with limited shopping options.



2022 CDC Runcards

STATION 4 INFORMATION

Primary Repeater	St. Joe Baldy FS
Street Address	1029 Center Ave, St. Maries
Receptionist/Frontliner	No
Cell Service	Good
WIFI Service	Yes, Agency WIFI
Yale key access?	Yes, west side pass gate, Contact DO for door key code.
Alternate Standby Location(s)	10th Sports Stop across street for restrooms and nice city park on west side of town off hwy 5 for shade, picnic tables and convenience store located across street.
Access Instructions	Contact DO.
Nearest Fuel	10 th Street Sports Stop across street.
Recommended Food Nearby	St. Maries has a numerous locations, take the time to explore.
Nearest Fill-sites	Travel North on 10 th Street all the way to the river, take a right down to the boat launch, respect folks using picnic area and launch, also a nice spot to stage until district personnel tie in with you.
Additional Information	Enjoy the Beautiful area and also make time to check out the Firefighter Memorial located at the St. Maries Cemetery on west side of town across from park.



2022 CDC Runcards

Preplanned Dispatch Runcard for:

AGENCY	UNIT	DISPATCH BLOCK #	DISPATCH BLOCK NAME	FDRA	COMMAND REPEATER
FS	D4	D4-1	CHECKERBOARD	SOUTH MOUNTAINS	CLOSEST

	LIGHT	MEDIUM	HEAVY	2 ND ALARM
FIRE RESPONSE	1 Engine -or- 1 WFM If closest resource is not District, also send District resource Notify D.O.	1 Engine 1 WFM -or- 2 nd Engine Air Attack If closest resource is not District, also send District resource	2 Engines 1 WFM 1 Chief Officer Air Attack 1 Helicopter	2 Engines 1 T2 Tactical Water Tender
TAC FREQ	PRI: COMUSE1 SEC: COMUSE2 TER: COMUSE4	PRI: COMUSE1 SEC: COMUSE2 TER: COMUSE4	PRI: COMUSE1 SEC: COMUSE2 TER: COMUSE4	
MOVE-UPS	Determined by D.O.	Determined by D.O.	Determined by D.O.	
CDC NOTIFICATIONS	IF Equipment is ordered notify FS Contracting Officer for potential EERA	IF Equipment is ordered notify FS Contracting Officer for potential EERA	IF Equipment is ordered notify FS Contracting Officer for potential EERA	
CONSIDERATIONS		Chief Officer Helibase location selected by D.O. in closest proximity to fire location	Helibase location selected by D.O. in closest proximity to fire location Retardant	
HAZARDS				
REMARKS	Notify Non FS Landowners	Notify Non FS Landowners	Notify Non FS Landowners	Notify Non FS Landowners

2022 CDC Runcards

Preplanned Dispatch Runcard for:

AGENCY	UNIT	DISPATCH BLOCK #	DISPATCH BLOCK NAME	FDRA	COMMAND REPEATER
FS	D4	D4-2	RESOURCE PROTECTION	SOUTH MOUNTAINS	CLOSEST

	LIGHT	MEDIUM	HEAVY	2 ND ALARM
FIRE RESPONSE	1 Engine -or- 1 WFM If closest resource is not District, also send District resource Notify D.O.	1 Engine -or- 1 WFM If closest resource is not District, also send District resource	1 Engine 1 WFM -or- 2'nd Engine 1 Chief Officer 1 Helicopter	1 Engine 1 T2 Tactical Water Tender
TAC FREQ	PRI: COMUSE1 SEC: COMUSE2 TER: COMUSE4	PRI: COMUSE1 SEC: COMUSE2 TER: COMUSE4	PRI: COMUSE1 SEC: COMUSE2 TER: COMUSE4	
MOVE-UPS	Determined by D.O.	Determined by D.O.	Determined by D.O.	
CDC NOTIFICATIONS	IF Equipment is ordered notify FS Contracting Officer for potential EERA	IF Equipment is ordered notify FS Contracting Officer for potential EERA	IF Equipment is ordered notify FS Contracting Officer for potential EERA	
CONSIDERATIONS		If available - Chief Officer Helibase location selected by D.O. in closest proximity to fire location	Helibase location selected by D.O. in closest proximity to fire location	
HAZARDS				
REMARKS	Notify Non FS Landowners	Notify Non FS Landowners	Notify Non FS Landowners	Notify Non FS Landowners

2022 CDC Runcards

Preplanned Dispatch Runcard for:

AGENCY	UNIT	DISPATCH BLOCK #	DISPATCH BLOCK NAME	FDRA	COMMAND REPEATER
FS	D4	D4-3	UPPER ST. JOE	SOUTH MOUNTAINS	SNOW OR SIMMONS

	LIGHT	MEDIUM	HEAVY	2 ND ALARM
FIRE RESPONSE	Notify Duty Officer Closest Available Aircraft for Recon.	1 District Engine -or- 1 WFM Closest Available Aircraft for Recon.	Move 1 Engine or 1 WFM to Red Ives HB 1 Type 3 Helicopter Closest Available Aircraft for Recon.	N/A
TAC FREQ	PRI: COMUSE1 SEC: COMUSE2 TER: COMUSE4	PRI: COMUSE1 SEC: COMUSE2 TER: COMUSE4	PRI: COMUSE1 SEC: COMUSE2 TER: COMUSE4	
MOVE-UPS	Determined by D.O.	Determined by D.O.	Determined by D.O.	
CDC NOTIFICATIONS	IF Equipment is ordered notify FS Contracting Officer for potential EERA.	IF Equipment is ordered notify FS Contracting Officer for potential EERA	IF Equipment is ordered notify FS Contracting Officer for potential EERA	
CONSIDERATIONS		If available - Chief Officer Helibase location selected by D.O. in closest proximity to fire location	If available - Chief Officer Helibase location selected by D.O. in closest proximity to fire location	
HAZARDS				
REMARKS	Request Dispatch to notify Adjacent Dispatch Center if Go decision is made	Request Dispatch to notify Adjacent Dispatch Center if Go decision is made	Request Dispatch to notify Adjacent Dispatch Center if Go decision is made	

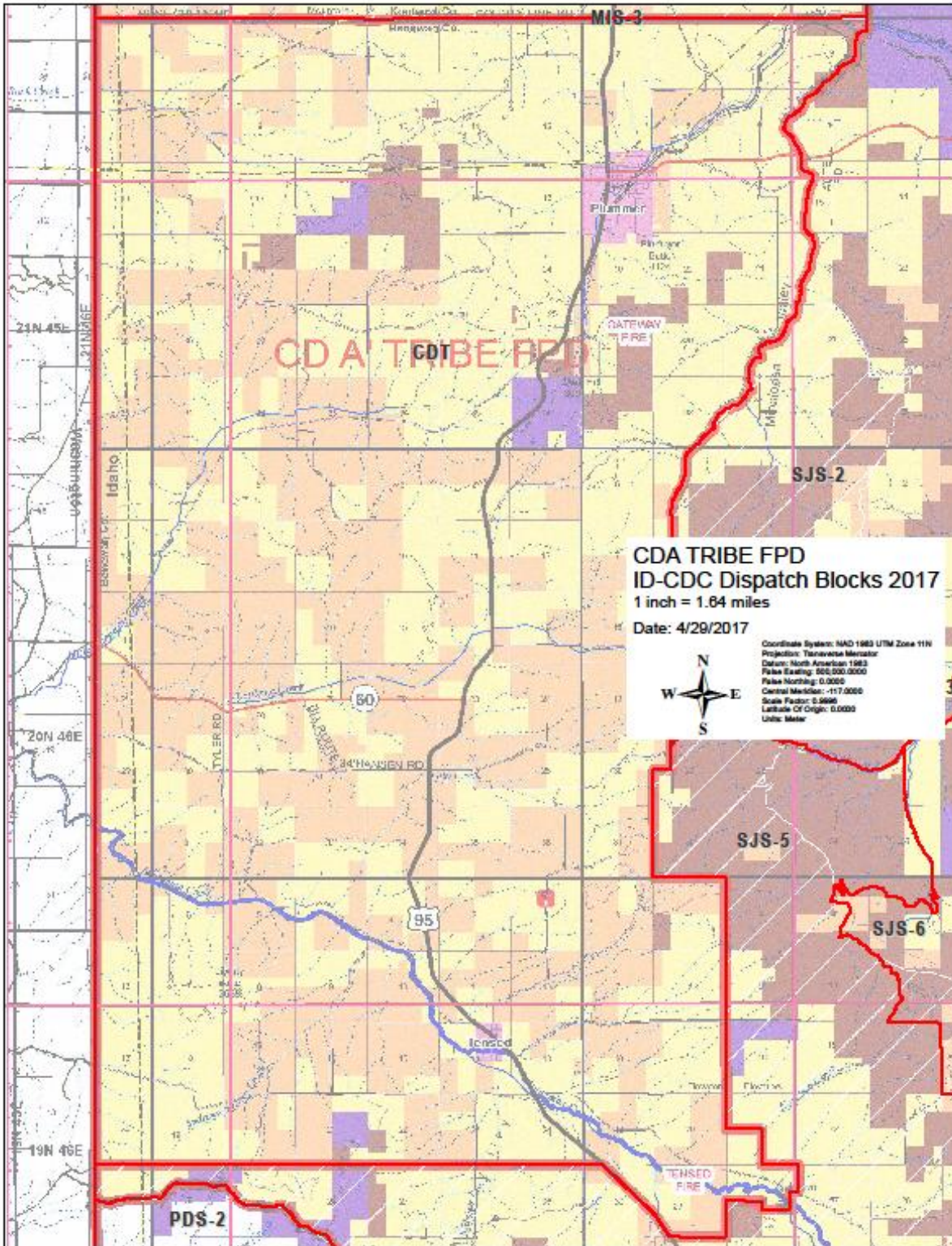
2022 CDC Runcards

Preplanned Dispatch Runcard for:

AGENCY	UNIT	DISPATCH BLOCK #	DISPATCH BLOCK NAME	FDRA	COMMAND REPEATER
FS	D4	D4-4	ABANDONED CAMPFIRE, BURN PILE, ETC	SOUTH MOUNTAINS	CLOSEST

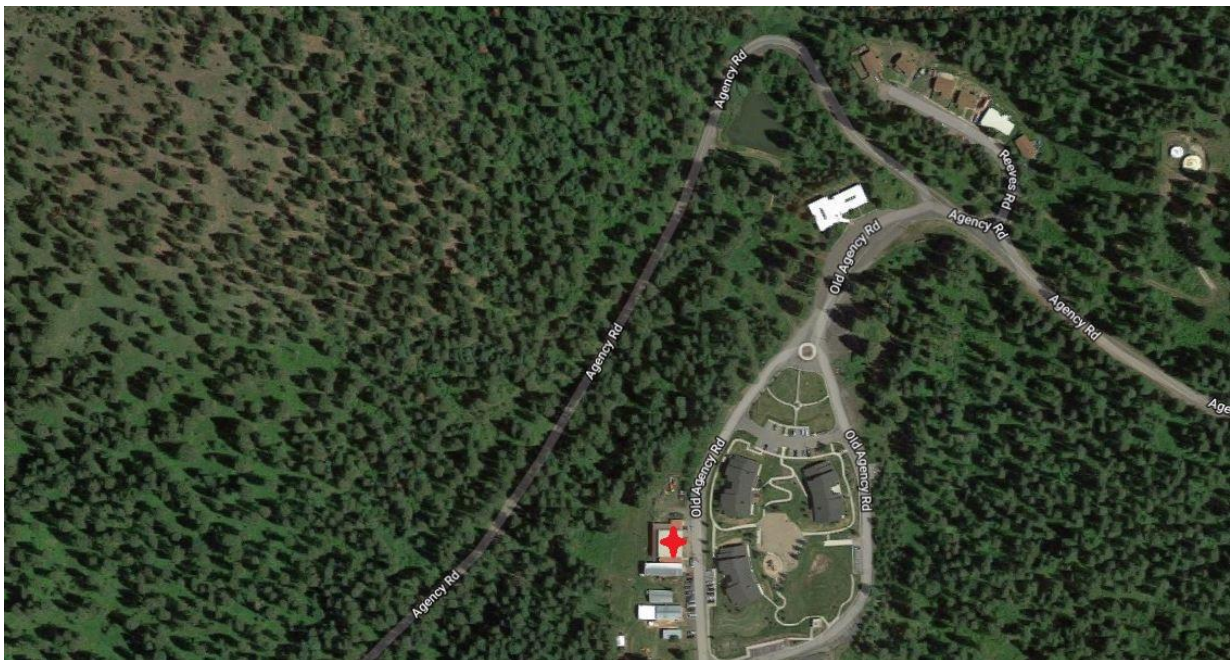
	LIGHT	MEDIUM	HEAVY	2 ND ALARM
FIRE RESPONSE	1 Engine -or- 1 WFM If closest resource is not District, also send District resource Notify D.O.	1 Engine -or- 1 WFM If closest resource is not District, also send District resource	1 Engine 1 WFM -or- 2'nd Engine 1 Type 2 or 3 Helicopter If closest resource is not District, also send District resource	1 Type 2 Tactical Water Tender
TAC FREQ	PRI: COMUSE1 SEC: COMUSE2 TER: COMUSE4	PRI: COMUSE1 SEC: COMUSE2 TER: COMUSE4	PRI: COMUSE1 SEC: COMUSE2 TER: COMUSE4	
MOVE-UPS	Determined by D.O.	Determined by D.O.	Determined by D.O.	
CDC NOTIFICATIONS	IF Equipment is ordered notify FS Contracting Officer for potential EERA.	IF Equipment is ordered notify FS Contracting Officer for potential EERA	IF Equipment is ordered notify FS Contracting Officer for potential EERA	
CONSIDERATIONS				
HAZARDS				
REMARKS	Notify Non FS Landowners	Notify Non FS Landowners	Notify Non FS Landowners	Notify Non FS Landowners

COEUR D' ALENE TRIBE



STATION 55 INFORMATION

Primary Repeater	Tekoa Butte, CDT
Street Address	Agency Road, Plummer, ID
Receptionist/Frontliner	
Cell Service	
WIFI Service	
Yale key access?	
Alternate Standby Location(s)	
Access Instructions	
Nearest Fuel	
Recommended Food Nearby	
Nearest Fill-sites	
Additional Information	



2022 CDC Runcards

Preplanned Dispatch Runcard for:

AGENCY	UNIT	DISPATCH BLOCK #	DISPATCH BLOCK NAME	FDRA	COMMAND REPEATER
CDT	CDT	CDT-1	CDT-PRIMARY	SOUTH VALLEY	TEKOA BUTTE

	LIGHT	MEDIUM	HEAVY	2 ND ALARM
FIRE RESPONSE	1 District Type 6 Engine -or- 1 District Engine of any type if in area and available	1 District Type 6 Engine 1 District Type 4 or 5 Engine ICT4	2 District Type 6 Engines 1 District Type 4 or 5 Engine ICT4 1 Type 2 or 3 Helicopter if needed and available	1 T2 Tactical Water Tender 1 ICT3 1 District Dozer
TAC FREQ	PRI: CDT TAC	PRI: CDT TAC	PRI: CDT TAC	PRI: CDT TAC
MOVE-UPS		Maintain 1 Type 6 Engine for I/A, unless multiple fires on district then DO approval needed	Maintain 1 Type 6 Engine for I/A, unless multiple fires on district then DO approval needed	Maintain 1 Type 6 Engine for I/A, unless multiple fires on district then DO approval needed
CDC NOTIFICATIONS		Fire Investigator Tribal Police Benewah County	Fire Investigator Tribal Police Benewah County	
CONSIDERATIONS			Fixed wing w/retardant Type 3 team if needed D.O. decision	
HAZARDS		WUI and local traffic Low hanging powerlines Light flashy fuels	WUI and local traffic Low hanging powerlines Light flashy fuels	WUI and local traffic Low hanging powerlines Light flashy fuels
REMARKS		Notify Agency Superintendent if larger than 5 acres	Notify Agency Superintendent if larger than 5 acres	

2022 CDC Runcards

DISPATCH APPENDICES

MOVE-UP AND COVER MATRIX

DISPATCH BLOCK	MEDIUM	HEAVY	2 ND ALARM
KVS-1		Maintain 1 Engine in BF	
KVS-2		Maintain 1 Engine in BF	
KVS-3		Maintain 1 Engine in BF	
KVS-4		Maintain 1 Engine in BF	
D7-1		Maintain 1 Module in BF	Maintain 1 Module in BF
D7-2		Maintain 1 Module in BF	Maintain 1 Module in BF
D7-3		Maintain 1 Module in BF	Maintain 1 Module in BF
D7-4		Maintain 1 Module in BF	Maintain 1 Module in BF
D7-5		Maintain 1 Module in BF	Maintain 1 Module in BF
D7-7		Maintain 1 Module in BF	Maintain 1 Module in BF
PLS-1		CONTACT DO	CONTACT DO
PLS-2		CONTACT DO	CONTACT DO
PLS-3		CONTACT DO	CONTACT DO
POS-1	CONTACT DO	Maintain 1 Engine in SP	
POS-2	CONTACT DO	Maintain 1 Engine in SP	
POS-3	CONTACT DO	Maintain 1 Engine in SP	
POS-4	CONTACT DO	Maintain 1 Engine in SP	
D6-1	CONTACT DO	CONTACT DO	CONTACT DO
D6-2	CONTACT DO	CONTACT DO	CONTACT DO
D6-3	CONTACT DO	CONTACT DO	CONTACT DO
D6-4	CONTACT DO	CONTACT DO	CONTACT DO
D6-5	CONTACT DO	CONTACT DO	CONTACT DO
MIS-1	Maintain 1 Engine in CDA	Maintain 1 Engine in CDA	Maintain 1 Engine in CDA
MIS-2	Maintain 1 Engine in CDA	Maintain 1 Engine in CDA	Maintain 1 Engine in CDA
MIS-3	Maintain 1 Engine in CDA	Maintain 1 Engine in CDA	Maintain 1 Engine in CDA
MIS-4	Maintain 1 Engine in CDA	Maintain 1 Engine in CDA	Maintain 1 Engine in CDA
CAS-1		1 Engine in Valley or Border	
CAS-2		1 Engine in Valley or Border	
CAS-3		1 Engine in Valley or Border	
CAS-4		1 Engine in Valley or Border	
D1-1	Maintain 1 Engine in CDA	Maintain 1 Engine in CDA, DO to Fernan	Maintain 1 Engine in CDA 1 I/A Mod to Fernan
D1-2		Maintain 1 Engine in CDA DO or ICT3 to SVO	Maintain 1 Engine in Valley 1 I/A Mod to SVO
D1-3		Maintain 1 Engine in CDA ICT3 to Fernan	ICT3 to Fernan BC to Fernan Maintain 1 Mod at Fernan

2022 CDC Runcards
MOVE-UP AND COVER MATRIX, CONT.

DISPATCH BLOCK	MEDIUM	HEAVY	2 ND ALARM
D1-4	Maintain 1 Engine in Valley	1 Engine to Fernan or SVO ICT3 to Fernan or SVO	Maintain 1 Module at SVO or Fernan ICT3 to Fernan or SVO BC to Fernan or SVO
D1-5		Maintain 1 Engine in Valley ICT3 to SVO	ICT3 or BC to SVO Maintain 1 Module at SVO
SJS-1		1 Engine to Border or SM	
SJS-2		1 Engine to Border or SM	
SJS-3		1 Engine to SM	
SJS-4		1 Engine to Border or SM	
SJS-5		1 Engine to Border or SM	
SJS-6		1 Engine to Border or SM	
SJS-7		1 Engine to Border	
SJS-8		1 Engine to Border or SM	
D4-1	CONTACT DO	CONTACT DO	
D4-2	CONTACT DO	CONTACT DO	
D4-3	CONTACT DO	CONTACT DO	
D4-4	CONTACT DO	CONTACT DO	
CDT-1	Maintain 1 Engine for IA	Maintain 1 Engine for IA	Maintain 1 Engine for IA

2022 CDC Runcards

RUNCARDS WITH AVIATION ASSETS ON FIRST-ALARM

DISPATCH BLOCK	LIGHT	MEDIUM	HEAVY
KVS-4			1 HELICOPTER
D7-1			1 HELICOPTER
D7-3			1 HELICOPTER
D7-4			1 HELICOPTER
D7-5			1 HELICOPTER
D7-6		CLOSEST FOR RECON	CLOSEST FOR RECON
D7-7			1 T3 HELICOPTER
D8-1		CLOSEST FOR RECON	CLOSEST FOR RECON
D8-2			1 T3 HELICOPTER
D8-4	CLOSEST FOR RECON	1 T3 HELICOPTER	1 T3 HELICOPTER
POS-1			1 HELICOPTER
POS-2			1 HELICOPTER
POS-3			1 HELICOPTER
POS-4			1 HELICOPTER
D6-1			1 HELICOPTER
D6-2			1 HELICOPTER
D6-3			1 HELICOPTER
D6-4			1 HELICOPTER
D6-5			1 HELICOPTER
MIS-1			ATGS OR 1 HELICOPTER
MIS-2			ATGS OR 1 HELICOPTER
MIS-3			ATGS OR 1 HELICOPTER
D1-5			1 HELICOPTER
SJS-4			1 IDL HELICOPTER
D4-1		ATGS	1 HELICOPTER, RETARDANT, ATGS
D4-2			1 HELICOPTER
D4-3	CLOSEST FOR RECON	CLOSEST FOR RECON	1 HELICOPTER, RECON
D4-4			1 T2 OR T3 HELICOPTER
CDT-1			1 T2 OR T3 HELICOPTER

2022 CDC Runcards

RUNCARDS WITH CHIEF OFFICERS ON FIRST ALARM

DISPATCH BLOCK	LIGHT	MEDIUM	HEAVY
PLS-2			FW OR AFW
PLS-3			FW OR AFW
D8-7			DISTRICT OVERHEAD
MIS-1			FW OR AFW
MIS-2			FW OR AFW
MIS-3	IDL REPRESENTATIVE		FW OR AFW
D1-1			BC
D1-2			BC
D4-1			BC OR DC
D4-2			BC OR DC

RUNCARDS WITH CONTACT DO ONLY

DISPATCH BLOCK	LIGHT	MEDIUM	HEAVY
KVS-1	X		
KVS-2	X		
KVS-3	X		
KVS-4	X		
PLS-1	X		
PLS-3	X		
D8-1	X		
D8-3	X		
POS-1	X		
POS-2	X		
POS-3	X		
POS-4	X		
D6-4	X	X	
D7-2	X	X	X
D7-6	X		
D1-5	X		

UNITS WITH DISTRICT-WIDE RUNCARDS

MIS: Runcard MIS-4 covers reported vehicle or structure fires threatening wildland.

D4: Runcard D4-4 covers reported abandoned campfires or burn piles.

DISPATCHER SITUATIONAL AWARENESS AID

MEDIUM RESPONSE LEVEL

FDRA	TOTAL # ATTACHED RUNCARDS	RUNCARDS WITH AIRCRAFT ON FIRST ALARM	RUNCARDS WITH MULTIPLE GROUND UNITS ON FIRST ALARM	RUNCARDS WITH ICT4 ON FIRST ALARM
NORTH MTN	25	2	0	1
NORTH VALLEY	4	0	0	0
SOUTH MTN	11	2	4 (36%)	0
SOUTH VALLEY	16	1	14 (88%)	0

HEAVY RESPONSE LEVEL

FDRA	TOTAL # ATTACHED RUNCARDS	RUNCARDS WITH AIRCRAFT ON FIRST ALARM	RUNCARDS WITH MULTIPLE GROUND UNITS ON FIRST ALARM	RUNCARDS WITH ICT4 ON FIRST ALARM
NORTH MTN	25	14 (60%)	13 (52%)	5 (20%)
NORTH VALLEY	4	3 (75%)	4 (100%)	4 (100%)
SOUTH MTN	11	6 (55%)	8 (73%)	6 (55%)
SOUTH VALLEY	16	5 (31%)	15 (94%)	15 (94%)

DISPATCH SCRIPTS

INITIAL RESPONSE

- 1) TRANSMIT FIRE ALERT NOISE
- 2) ANNOUNCE “ _____ PLEASE RESPOND TO A SMOKE REPORT IN _____ ”
(RESOURCES) (GEOGRAPHICAL LOCATION)
- 3) WAIT 10 SECONDS
- 4) ANNOUNCE “ _____ THIS WILL BE A _____ RESPONSE TO _____ ”
(RESOURCES) (DISPATCH LEVEL) (DISPATCH BLOCK)
- 5) ANNOUNCE “THIS WILL BE INCIDENT _____ AND IS LOCATED AT _____ ”
(WILDCAD INCIDENT #) (LATLONG, STREET ADDRESS, OR MILEPOST IF AVAIL)
“THE COMMAND REPEATER WILL BE _____ AND THE TAC CHANNEL IS _____ ”
(REPEATER) (TAC CHANNEL)
- 6) WAIT 2-3 SECONDS
- 7) IN ORDER OF DISPATCH, ASK IF UNITS COPIED AND ESTABLISH POSITIVE COMMUNICATION
- 8) CONTACT THE APPROPRIATE DUTY OFFICER(S)
“ENGINE 62, ENGINE 2151 PLEASE RESPOND TO A SMOKE IN THE LACLEDE AREA”
“ENGINE 62, ENGINE 2151, THIS WILL BE A MEDIUM RESPONSE TO DISPATCH BLOCK POS-3”
“THIS WILL BE INCIDENT 452 AND IS LOCATED AT 48 15.65 x 116 13.34, STREET ADDRESS 11475 MEADOW DRIVE. THE COMMAND REPEATER WILL BE BLACK FS AND THE TAC CHANNEL IS COMUSE3”
“ENGINE 62, DID YOU COPY?” “ENGINE 2151, DID YOU COPY?”

SUBSEQUENT RESPONSES

- 1) TRANSMIT FIRE ALERT NOISE
- 2) ANNOUNCE “ _____ PLEASE RESPOND TO THE _____ FIRE”
(RESOURCES) (FIRE NAME)
- 3) WAIT 10 SECONDS
- 4) ANNOUNCE “ _____ THIS WILL BE A RESPONSE TO THE _____ FIRE, LOCATED AT _____ IS THE INCIDENT COMMANDER, _____ IS THE COMMAND REPEATER, _____ IS THE TAC CHANNEL”
(RESOURCES) (FIRE NAME) (GEOGRAPHICAL AREA OR LATLONG) (NAME OF I.C.) (REPEATER) (TAC CHANNEL)
- 5) WAIT 2-3 SECONDS
- 6) IN ORDER OF DISPATCH, ASK IF UNITS COPIED AND ESTABLISH POSITIVE COMMUNICATION
- 7) CONTACT THE APPROPRIATE DUTY OFFICER(S)
“HELICOPTER 48U, PLEASE RESPOND TO THE SIWASH FIRE”
“HELICOPTER 48U, THIS WILL BE A RESPONSE TO THE SIWASH FIRE, LOCATED IN SIWASH CREEK AT 46 14.43 x 115 34.34, STEVENS IS THE INCIDENT COMMANDER, MIDDLE SISTER IS THE COMMAND REPEATER, COMUSE3 IS THE TAC CHANNEL”
“HELICOPTER 48U, DID YOU COPY?”

2022 CDC Runcards

SECOND ALARMS

- 1) TRANSMIT FIRE ALERT NOISE
- 2) ANNOUNCE " _____ PLEASE RESPOND TO THE _____ FIRE"
(RESOURCES) (FIRE NAME)
- 3) WAIT 10 SECONDS
- 4) ANNOUNCE " _____ THIS WILL BE A SECOND-ALARM RESPONSE TO THE _____ FIRE,
LOCATED AT _____, _____ IS THE INCIDENT COMMANDER, _____ IS THE COMMAND
(RESOURCES) (FIRE NAME)
(GEOGRAPHICAL AREA OR LATLONG) (NAME OF I.C.) (REPEATER)
REPEATER, _____ IS THE TACTICAL CHANNEL"
(TAC CHANNEL)
- 5) WAIT 2-3 SECONDS
- 6) IN ORDER OF DISPATCH, ASK IF UNITS COPIED AND ESTABLISH POSITIVE COMMUNICATION
- 7) CONTACT THE APPROPRIATE DUTY OFFICER(S)

"MODULE 21, PLEASE RESPOND TO THE MONKEY FIRE"

"MODULE 21, THIS WILL BE A SECOND-ALARM RESPONSE TO THE MONKEY FIRE, LOCATED IN MONTGOMERY GULCH AT 46 14.43 x 115 34.34, MCLEOD IS THE INCIDENT COMMANDER, IDL WARDNER IS THE COMMAND REPEATER, IDL DIRECT4 IS THE TACTICAL CHANNEL"

"MODULE 21, DID YOU COPY?"

MOVE-UPS

- 1) TRANSMIT FIRE ALERT NOISE
- 2) ANNOUNCE " _____ PLEASE MOVE-UP TO _____ "
(RESOURCE) (FIRE STATION NUMBER OR MOVE-UP LOCATION)
- 3) WAIT 10 SECONDS
- 4) ANNOUNCE " _____ THIS WILL BE A MOVE-UP TO _____ "
(RESOURCE) (FIRE STATION NUMBER OR MOVE-UP LOCATION)
- 5) WAIT 2-3 SECONDS
- 6) ASK IF UNIT COPIED AND ESTABLISH POSITIVE COMMUNICATION
- 7) CONTACT THE APPROPRIATE DUTY OFFICER(S)

"ENGINE 11, PLEASE MOVE UP TO STATION 3"

"ENGINE 11, THIS WILL BE A MOVE UP TO STATION 3"

"ENGINE 11, DID YOU COPY"

SUBSEQUENT INFO EXAMPLE SCRIPTS:

"UNITS RESPONDING TO INCIDENT 432, THE REPORTING PARTY ADVISES THAT THE FIRE IS AT THE 432/567 ROAD JUNCTION"

"UNITS RESPONDING TO INCIDENT 432, BE ADVISED THAT A HEAVY TANKER IS NOW AVAILABLE IN COEUR D' ALENE"

"UNITS RESPONDING TO INCIDENT 432, BE ADVISED OF AN ADDITIONAL SMOKE REPORTED 2 MILES EAST"

2022 CDC Runcards

EMS RESPONSE (FIRE MODULE WITH EMS PROVIDER ATTACHED)

- 1) IF IT HASN'T ALREADY BEEN DONE, CLEAR RADIO FREQUENCY FOR EMERGENCY TRAFFIC
"ALL STATIONS, THIS IS COEUR D' ALENE DISPATCH. BREAK FOR EMERGENCY TRAFFIC."
- 2) TRANSMIT FIRE ALERT NOISE
- 3) ANNOUNCE "EMS RESPONSE FOR _____"
(RESOURCE)
- 4) WAIT 5 SECONDS
- 5) ANNOUNCE "EMS RESPONSE FOR _____ . _____ ARE YOU READY TO COPY DISPATCH
INFORMATION?"
(RESOURCE) (RESOURCE)
- 6) WHEN POSITIVE COMMUNICATION IS ESTABLISHED, PROVIDE THE FOLLOWING:
--INCIDENT LOCATION
--ALL INFORMATION FROM 8-LINE / MEDICAL INCIDENT REPORT
--INFORMATION ON ADDITIONAL RESPONDING EMS RESOURCES
--COMMAND REPEATER
- 7) MAKE NOTIFICATIONS AS PER APPENDIX H – MEDICAL DISPATCH PROCEDURES

"ALL STATIONS, THIS IS COEUR D'ALENE DISPATCH. BREAK FOR EMERGENCY TRAFFIC"

"EMS RESPONSE FOR ENGINE 641"

"EMS RESPONSE FOR ENGINE 641. ENGINE 641 ARE YOU READY TO COPY DISPATCH INFORMATION?"

EMS RESPONSE (INDIVIDUAL EMS PROVIDER)

UTILIZE TELEPHONE WHEN ABLE, RADIO AS SECOND OPTION

- 1) IF NECESSARY, CLEAR RADIO FREQUENCY FOR EMERGENCY TRAFFIC
"ALL STATIONS, THIS IS COEUR D' ALENE DISPATCH. BREAK FOR EMERGENCY TRAFFIC."
- 2) MAKE TELEPHONE OR RADIO CONTACT WITH EMS PROVIDER
- 3) ASK EMS PROVIDER IF THEY ARE AVAILABLE FOR AN EMS RESPONSE AND IF THEY ARE READY TO COPY INFORMATION
- 4) WHEN EMS PROVIDER IS READY TO COPY, PROVIDE THE FOLLOWING:
--INCIDENT LOCATION
--ALL INFORMATION FROM 8-LINE / MEDICAL INCIDENT REPORT
--INFORMATION ON ADDITIONAL RESPONDING EMS RESOURCES
--COMMAND REPEATER
- 5) MAKE NOTIFICATIONS AS PER APPENDIX H – MEDICAL DISPATCH PROCEDURES